

Efficiency drives sustained outcomes

INPUTS

Financial capital
 Equity: ₹ 1,25,804 Lakhs Debt: ₹ 70,431 Lakhs
 Retained earnings: ₹ 60,357 Lakhs
 Capital commitment as on 31st March, 2020: ₹ 24,641 Lakhs

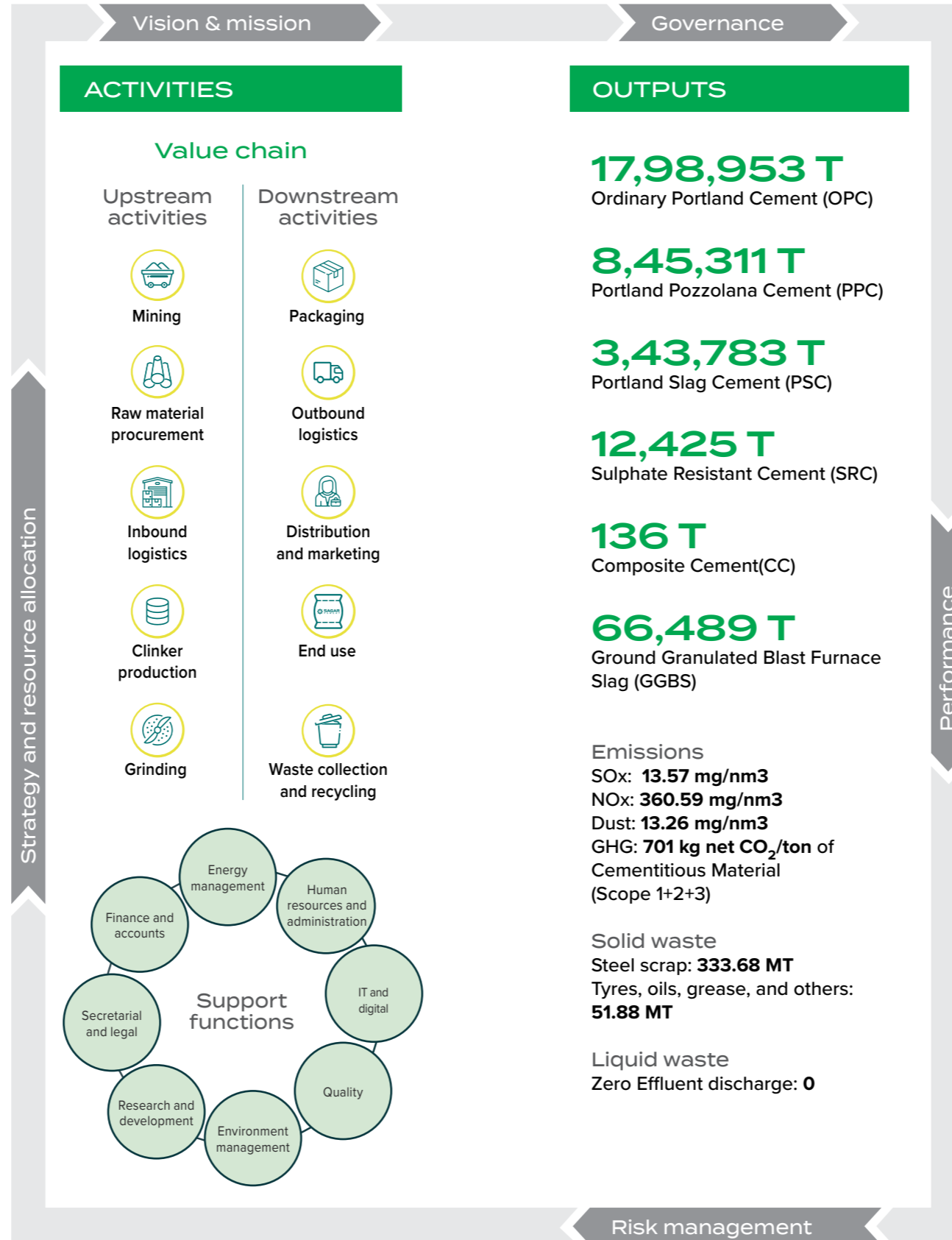
Manufactured capital
 Number of Integrated cement plants : 2 Number of grinding units: 1
 Total installed capacity of cement production: 5.75 MTPA
 Total installed capacity of clinker production: 3.80 MTPA
 Number of thermal power plants: 2 Number of solar stations: 3
 Number of waste heat recovery plants: 1
 Total waste heat recovery capacity: 8.80 MW
 Total solar power capacity installed: 1.45 MW
 Total hydro power capacity: 8.30 MW
 Number of offices: 9 Number of warehouses: 52
 Total value of net fixed assets: ₹ 1,84,125 Lakhs

Intellectual capital
 Technology collaborations: **Taking collaboration as per development projects and as required**
 Use of robotics in plant operations: 2 in running plants +2 in plants in construction.
 Total Investment in R&D: ₹ 22.42 Lakhs
 Digitalisation initiatives: **In Progress**
 Unique technologies used in production including robotics for quality check
 Location strategy and load-distance planning

Human capital
 Employees: 2,204 Total hours of training provided: 8,129
 People employed for >10 years within SCL: 246
 Employees belonging to local communities: ~23%

Social and relationship capital
 Total CSR expenditure: ₹ 130 Lakhs Distributors: 1,732

Natural capital
 Total limestone mine reserves: 629.22 MnT
 Limestone mined: 3.31 MnT Total coal used: 0.25 MnT
 Freshwater withdrawal: 177246 kL
 Direct energy consumed at kilns: 16,36,950 Million kcal
 Indirect energy consumed: 11,373.72 mWh
 Solar power consumed (net): 1,767.18 mWh
 Thermal substitution rate: 4.69% (Mattampally) & 0.94% (Gudipadu)
 Fly ash consumed: 0.29 MnT
 Gypsum consumed: 0.08 MnT Slag consumed: 0.30 MnT



OUTPUTS

17,98,953 T
 Ordinary Portland Cement (OPC)

8,45,311 T
 Portland Pozzolana Cement (PPC)

3,43,783 T
 Portland Slag Cement (PSC)

12,425 T
 Sulphate Resistant Cement (SRC)

136 T
 Composite Cement(CC)

66,489 T
 Ground Granulated Blast Furnace Slag (GGBS)

Emissions
 SOx: 13.57 mg/nm3
 NOx: 360.59 mg/nm3
 Dust: 13.26 mg/nm3
 GHG: 701 kg net CO₂/ton of Cementitious Material (Scope 1+2+3)

Solid waste
 Steel scrap: 333.68 MT
 Tyres, oils, grease, and others: 51.88 MT

Liquid waste
 Zero Effluent discharge: 0

OUTCOMES

Financial capital
 Revenue: ₹ 1,35,257 Lakhs EBITDA: ₹ 40,044 Lakhs
 PAT: ₹ 18,560 Lakhs ROE: 16%
 RoCE: 19% EPS: ₹80.24
 Dividend declared: 65%

Manufactured capital
 Capacity utilisation: 53%
 Plant availability: 100%
 Increase in the production of high-margin products: 3%

Intellectual capital
 Key process improvements achieved during the year:
Improved TSR ratio, Improved Blended cements volume.
 Cost savings from digitalisation: **In implementation**

Human capital
 LTIFR: 0 Fatalities: 0
 Number of safe man-hours: 35,38,009
 Per-tonne productivity per employee: 1,392
 Employee retention rate: 90%+ in all locations
 Employees promoted: 6

Social and relationship capital
 Beneficiaries of CSR activities: 20,000 +
 Vendors engaged with: 664
 Customer complaints resolved: 100%
 Credit rating: **IND A/Positive**
 Contribution to the exchequer: ₹ 41,651 Lakhs

Natural capital
 Wastewater recycled: 48,611 kL
 Waste heat recovered: 40,895.47 MWh (Mattampally)
 Solid waste recycled: 8,94,495 MT
 Waste to landfill: 0