



## Communities

We seek to contribute generously and responsibly for the well-being of the communities in which we operate. We aim to remain a corporation that gives back, to uplift and enhance the lives of our neighbours.

Investment primarily focuses on crucial sectors such as health, education, livelihood generation, and rural development through collaborative social projects with our NGO partners. We have established key performance indicators (KPIs) and targets to periodically assess and oversee these projects. Employees actively involved in corporate social responsibility (CSR) initiatives receive acknowledgement and recognition for their dedicated efforts.

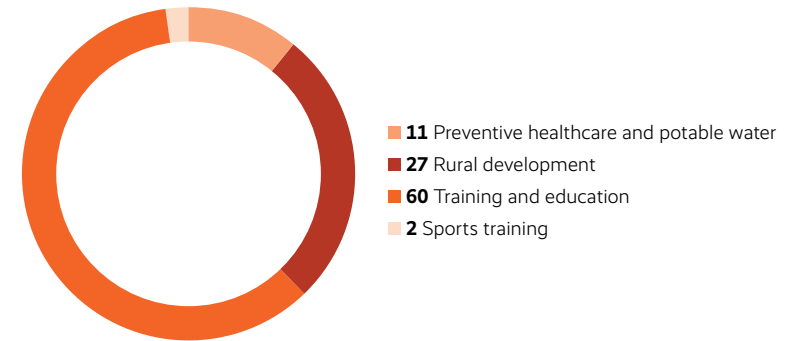


### Key highlights of FY2024

**1,07,865**  
Lives impacted

**₹ 290.11** Lakhs  
CSR spend

### FY2024 CSR spend (%)



### Key initiatives

- Facilitating drinking water supply by providing RO water purifiers. We are also supporting and creating irrigation facilities
- Construction of public toilets
- Providing skill development programmes to graduate students to increase their employability
- Constructing concrete roads and installing streetlights to support infrastructure development in villages
- Distribution of garbage bags and dustbins as part of Swachhata hi Seva campaign
- Helping educational institutions by providing learning material, sports equipment, etc.
- Conducted surveys in the neighbourhood of the Mattampally plant to identify and prioritise initiatives aimed at enhancing the quality of life

### Action plan

- Contribute to the PM National Relief Fund and other funds set up by the Central Government for the socio-economic development and welfare of the SC, ST and other backward classes, minorities, and women
- Invest in technologies for community upliftment and development