

Shaping a sustainable business

Inputs

Financial capital

Pool of funds allocated and utilised for all business activities

- Total Equity: ₹2,614 Lakhs
- Total Debt: ₹1,67,199 Lakhs
- Capital commitment as on 31st March 2026: ₹17,447 Lakhs

Manufactured capital

Assets built or owned that facilitate production, storage and delivery of goods.

- Integrated Cement Plants: 4
- Grinding Plants: 2
- Solar Power Plants: 6
- Hydro power plants: 2
- Limestone reserves: 1,030 MT

Intellectual capital

Organisation's all Intangible assets that contributes to its bottom line.

- R&D investment: ₹767 Lakhs
- CAPEX Investment: ₹42,331 Lakhs
- Robotic arm installed across all integrated plants.

Human capital

Talent acquired and nurtured to manage all business activities.

- Employee strength: 1,207
- Total employee expense: ₹14,919 Lakhs
- Total training hours: 35,286 Hrs

Social & Relationship capital

Building trusted partnerships with key stakeholder groups

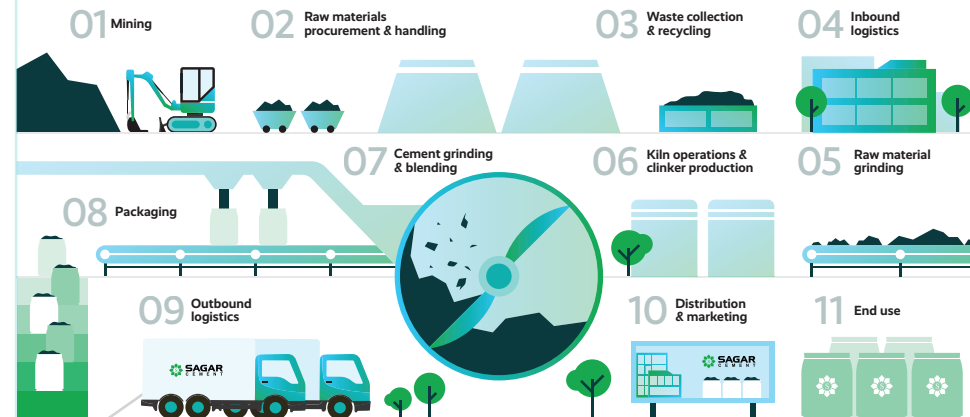
- CSR spend: ₹178 Lakhs
- Distributors/Dealers: 3,368

Natural capital

Resources provided by the natural world that are impacted due to business operations

- Total energy consumed: 16,565 TJ
- Limestone mined: 6.79 MT
- Total Green Energy Consumption: 88,194 MWh
- Alternate Fuels consumed: 69,487 T
- Alternate Raw Materials: 16,91,596 T

Vision & Mission Value chain



Risk management

Governance

Outputs

31,83,331 T Ordinary Portland Cement (OPC)	5,09,327 T Portland Slag Cement (PSC)	2,40,897 T Composite Cement (CC)	1,25,332 T Ground Granulated Blast-furnace Slag (GGBS)
19,75,898 T Portland Pozzolana Cement (PPC)	47,733 T Sulphate Resistant Cement (SRC)	47,49,882 T Clinker production	

Support functions



Performance

Outcomes

Value created for stakeholders

Investors

- Revenue growth: 17%
- RoCE: 2.31%

Customers

- GreenPro certified blended cements products
- Strengthened long-standing relationship with marquee clients
- Cement produced: 60,82,518 T
- Capacity utilisation: 60%

People

- LTIFR: 0.24
- Average training hours per employee: 9.86

Partners and suppliers

- Vendors 5,928
- Procurement from MSME 22%
- Procurement from local suppliers 91.3%

Communities

- CSR beneficiaries: 1,90,000+

Environment

- Reduction in GHG emissions: 0.39%
- Total waste reused: 38,556 T
- Total water recycled: 1,71,344 KL
- Water positive: 3X times

Government regulators

- Contribution to the exchequer: ₹67,377 Lakhs