



**SAGAR CEMENTS LIMESTONE MINE  
OF  
SAGAR CEMENTS LIMITED**

**An ISO 9001:2015, 14001:2015, 45001:2018,  
50001:2018 & Green Co-Gold Certified Company**



# Sustainable Development Framework (SDF) and CSR Initiatives

2021-22







## About SAGAR CEMENTS LIMITED.....

Sagar Cements Ltd., was promoted by a group of technocrats headed by Shri O Swamy Natha Reddy, Chairman, Shri S Anand Reddy, Managing Director, Shri S Sreekanth Reddy, Joint Managing Director.

Sagar Cements Ltd., is located at Suryapet district of Telangana State, the company manufacture various types of Cements like Ordinary Portland Cement (OPC) 53 grade, 43 grade, Portland Pozzolana Cement (PPC) and Sulphate Resistant Cement (SRC) to suit different needs of customers and all these products are being sold under the brand name “SAGAR CEMENTS” which has already become popular in Telangana, Andhra Pradesh, Tamilnadu and in the neighboring states as well.

The company has started its operation with a cement capacity of 66,000 TPA in 1985 has gradually increased it to the level of 2.65 MTPA Clinker production capacity.

Sagar Cements Ltd., Mattampally unit is IMS certified since 13<sup>th</sup> June 2014 includes;

Quality Management System	: ISO 9001 – 2015
Environmental Management System	: ISO 14001 – 2015
Occupational Health & Safety and Energy Management System	: ISO 45001:2018 & 50001:2018

IMS allows the management team to create one system that can help to effectively and efficiently deliver organizational goals &  
Green Co (Gold Certificate)

DNV-GL

MANAGEMENT SYSTEM  
CERTIFICATE

Certificate No: 156665-2014-AE-IND-RvA Initial certification date: 13 June 2014 Valid: 13 June 2020 - 12 June 2023

This is to certify that the management system of

Sagar Cements Limited

Head Office: Plot No 111, Road No 10, Jubilee Hills, Hyderabad - 500 033, Telangana, India

and the sites as mentioned in the appendix accompanying this certificate

has been found to conform to the Quality Management System standard:  
**ISO 9001:2015**

This certificate is valid for the following scope:  
**Manufacture of clinker and cement**

DNV-GL

MANAGEMENT SYSTEM  
CERTIFICATE

Certificate No: 156667-2014-AE-IND-RvA Initial certification date: 13 June 2014 Valid: 13 June 2020 - 12 June 2023

This is to certify that the management system of

Sagar Cements Limited

Head Office: Plot No 111, Road No 10, Jubilee Hills, Hyderabad - 500 033, Telangana, India

and the sites as mentioned in the appendix accompanying this certificate

has been found to conform to the Environmental Management System standard:  
**ISO 14001:2015**

This certificate is valid for the following scope:  
**Manufacture of clinker and cement**

DNV-GL

MANAGEMENT SYSTEM  
CERTIFICATE

Certificate No: 10000381619-MSC-RvA-IND Initial certification date: 13 June 2014 Valid: 13 June 2020 - 12 June 2023

This is to certify that the management system of

Sagar Cements Limited

Head Office: Plot No 111, Road No 10, Jubilee Hills, Hyderabad - 500 033, Telangana, India

and the sites as mentioned in the appendix accompanying this certificate

has been found to conform to the Occupational Health and Safety Management System standard:  
**ISO 45001:2018**

This certificate is valid for the following scope:  
**Manufacture of clinker and cement**

DNV-GL

MANAGEMENT SYSTEM  
CERTIFICATE

Certificate No: 286750-2019-AL-IND-RvA Initial certification date: 31 July 2019 Valid: 31 July 2019 - 31 July 2022

This is to certify that the management system of

Sagar Cements Limited

Site I: Mattampally (PO & M), Suryapet District - 508 204, Telangana, IN

has been found to conform to the Energy Management System standard:  
**ISO 50001:2018**

This certificate is valid for the following scope:  
**Manufacture of clinker and cement**

Place and date:  
Chennai, 17 September 2020

The RvA is a signatory to the IAF MLR

For the issuing office:  
DNV GL - Business Assurance  
ROMA, No. 10, GST Road, Alandur,  
Chennai - PIN - 600 016, India

Sivadasan Madiyath  
Management Representative

Lack of fulfillment of conditions as set out in the Certification Agreement may render this Certificate invalid.  
ACCREDITED UNIT: DNV GL Business Assurance B.V., Zwolsseweg 1, 2994 LB, Barendrecht, Netherlands. TEL: +31 (0)102922689.  
www.dnvgl.com/assurance

Place and date:  
Chennai, 17 September 2020

The RvA is a signatory to the IAF MLR

For the issuing office:  
DNV GL - Business Assurance  
ROMA, No. 10, GST Road, Alandur,  
Chennai - PIN - 600 016, India

Sivadasan Madiyath  
Management Representative

Lack of fulfillment of conditions as set out in the Certification Agreement may render this Certificate invalid.  
ACCREDITED UNIT: DNV GL Business Assurance B.V., Zwolsseweg 1, 2994 LB, Barendrecht, Netherlands. TEL: +31 (0)102922689.  
www.dnvgl.com/assurance

Place and date:  
Barendrecht, 28 September 2020

The RvA is a signatory to the IAF MLR

For the issuing office:  
DNV GL - Business Assurance  
Zwolsseweg 1, 2994 LB Barendrecht,  
Netherlands

Eric Koek  
Management Representative

Lack of fulfillment of conditions as set out in the Certification Agreement may render this Certificate invalid.  
ACCREDITED UNIT: DNV GL Business Assurance B.V., Zwolsseweg 1, 2994 LB, Barendrecht, Netherlands. TEL: +31 (0)102922689.  
www.dnvgl.com/assurance

Place and date:  
Barendrecht, 31 August 2019

The RvA is a signatory to the IAF MLR

For the issuing office:  
DNV GL - Business Assurance  
Zwolsseweg 1, 2994 LB Barendrecht,  
Netherlands

Eric Koek  
Management Representative

Lack of fulfillment of conditions as set out in the Certification Agreement may render this Certificate invalid.  
ACCREDITED UNIT: DNV GL Business Assurance B.V., Zwolsseweg 1, 2994 LB, Barendrecht, Netherlands. TEL: +31 (0)102922689.  
www.dnvgl.com/assurance



WATER  
MANAGEMENT  
POLICY



We at Sagar Cements Limited have committed to become ‘Water Neutral’ in cement manufacturing and power generation by taking decisive steps in conserving water:

- Implementing an Integrated Water Resource Management plan that accomplishes the objectives of water conservation
- Introducing a Water Reporting system including specific water consumption
- Ensuring effective utilization of available water by implementing provisions of measurement and monitoring of water sourcing and consumption
- Adopting measures to reduce water consumption where water usage cannot be totally avoided
- Choosing alternate process technologies wherever feasible which does not require water use
- Identifying production processes where recycled and treated water can be used
- Practicing cascade use of water in process wherever feasible
- Using recycled and treated water in plantations including installation of drip irrigation systems
- Accommodating appropriate designs for rainwater harvesting and campaigning for the same in the local community
- Pursuing surface water conservation through construction of check dams and harvest pits
- Conducting seminars and workshops on water conservation for promoting awareness among all levels of employees

Let us make a pledge to conserve water for our future!

Managing Director

WASTE  
MANAGEMENT  
POLICY



We at Sagar Cements Limited as a responsible corporate entity are committed to reduce waste and its impact on the environment by adopting sustained measures:

- Incorporating a hierarchical approach to reduce, reuse, recycle, and recover to the maximum possible extent through viable technologies
- Handling all waste materials in a responsible manner by collecting, storing, transporting, and disposing them such that the environmental impact is effectively mitigated
- Taking all efforts toward reduction of waste materials and setting standards for continuous improvement in Waste Management
- Learning and implementing best practices in Sourcing and consuming RDF (Refuse Derived Fuels) in kiln processes with the larger objective of reducing the impact on the environment by liaising with the relevant experts and authorities
- Conducting seminars and workshops for competency-building and promoting awareness through poster campaigns, notices, slogans, and other effective communication drives
- Complying with all legal and other statutory requirements that are in force from time to time

Let us make a pledge to reduce, reuse, recycle, and recover!

Managing Director

ENERGY  
MANAGEMENT  
POLICY



We at Sagar Cements Limited have committed ourselves to reduce the energy consumption and minimize carbon emissions through continuous improvement of our manufacturing processes and power generation activities:

- Employing the latest methods and technologies for energy efficient processes and equipment, and continuously upgrading them
- Ensuring that all activities are aligned with minimizing energy loss and maximizing waste energy recovery
- Seeking to raise the renewable energy component within the organization to 30% in first phase and to 50% subsequently
- Devising schemes that encourage the use of energy from alternate / waste energy materials
- Keeping control on generation and consumption of all forms of energy and periodically reviewing for continuous betterment
- Conducting awareness programs and competency-building workshops for all levels of employees for efficient Energy Management and encouraging them to be actively involved and come up with their own innovative suggestions
- Ensuring that all energy efficient processes employed are functioning as intended by conducting energy audits at regular intervals by internal and external auditors
- Benchmarking our performance in accordance with the industry best, setting targets, documenting and communicating the goals to all levels, while facilitating resources to reach the targets
- Undertaking to comply not only to all relevant legislation relating to energy usage but also adapting voluntarily the global best practices
- Publishing the results of energy management efforts and evaluating the performance each and every year

Let us make a pledge to achieve an outstanding energy performance!

Managing Director



ENVIRONMENT  
POLICY



CORPORATE  
SUSTAINABILITY  
POLICY



GREEN  
SOURCING  
POLICY



We at Sagar Cements Limited as an environmentally conscious company have taken a firm resolve to follow the best practices in preserving and enhancing the environment:

- Taking necessary steps toward monitoring, minimizing and mitigating the release of pollutants in the environment by adopting the best practices and eco-friendly technologies and processes in mining, cement manufacturing and logistics.
- Supporting a healthy ecosystem and promoting biodiversity by planting more trees and developing water bodies in and around mining, plant and township.
- Optimizing the use of crucial natural finite resources like minerals, fuels, energy, water, and land to save them from rapid depletion
- Utilizing all grades of minerals by adoption of the right process technologies, use of alternate fuels, and innovations in product and manufacturing
- Regulating water consumption, recycling water, installing water treatment facilities, and ensuring zero waste water discharge across all plant operations along with pursuing rainwater harvesting to minimize fresh water consumption
- Supporting all our suppliers in adopting environment-friendly practices and maximizing sourcing of products and services from suppliers who practice environment friendly systems
- Deploying an Environment Management System across all operations and activities
- Taking inputs and ideas from employees and conducting regular brainstorming sessions on how to promote environment friendliness through macro and micro initiatives in the plant and outside
- Conducting periodic workshops and seminars for promoting and propagating an environment conscious culture among employees and relevant stakeholders
- Setting performance objectives and goals, close monitoring of environmental performance, and periodic reporting to all stakeholders
- Ensuring compliance with all applicable laws including environment and forest clearances, consents, permits, licenses, standards, and leading industry initiatives from time to time.

Let us make a pledge to achieve outstanding environmental performance!

Managing Director



We at Sagar Cements Limited have committed ourselves to Protect the environment and social well-being of the community among whom we conduct our businesses:

- Ensuring compliance with all applicable laws, standards, and regulations pertaining to the environment, energy, occupational health and safety, social welfare and corporate governance
- Adapting the state-of-the-art technologies in mining, manufacturing and logistics
- Making continuous and sustained efforts to conserve natural resources like limestone, fossil fuels, gypsum, etc. by minimizing their use, avoiding rejections, and using alternate fuels and raw materials
- Taking necessary steps towards energy and water conservation, and reduction of carbon intensity
- Educating and training employees on environmental and social initiatives and making them an integral part of our sustainable business efforts
- Keeping our stakeholders updated and ensuring that their environmental and social considerations are aligned with our business decisions and environmental goals
- Providing equal opportunities to every employee for his or her personal growth and providing support through training programs, capacity building seminars, etc.
- Enhancing the quality of life of the local community by taking appropriate steps toward enhancing their socio-economic development
- Raising the goals of sustainability indicators, monitoring performance, and preparing reports to keep the stakeholders duly informed

Let us make a pledge to work closely toward holistic development of the society!

Managing Director



We at Sagar Cements Limited have taken a resolve to reduce the company’s environmental impact in sourcing of materials, products, and services by effective measures:

- Supporting and showing preference to procure materials and services from those suppliers who have adopted best environmental practices
- Ensuring that all products and services are aligned with our Green Sourcing policy by issuing internal guidelines that specifically define the parameters and practices
- Adopting and effectively integrating the concepts of reduction, reuse, and recovery into our sourcing models
- Encouraging suppliers and service providers to improve their environmental performance by adopting best practices in their individual manufacturing processes
- Setting up relevant training and capacity-building workshops to enhance the competency of all staff and other personnel who are directly involved in procurement activities
- Ensuring compliance with all legal requirements and other standards and regulations that are published and mandated by the Government of India and other compliance bodies and organizations
- Keeping all our stakeholders informed about our Green Sourcing policy and making the relevant information available to them including regular updates on the best practices

Let us make a pledge to promote sustainable development!

Managing Director



Particulars	Mine – 1
Name of the Mine	SCL Mine – 1
Mine Opening Date (Initial)	18.08.1984
Extent	326.58 Ha
Lease Validity	17.08.2034
Category of Lands	Govt. & Patta Lands
Location (Geo Co Ordinates)	79° 50’ 21.6” – 79° 52’ 23.3”
Topo sheet No	56 P/13&14 on 1: 50000 Scale
Type of Mining	Conventional Open Cast (Mechanized) by deploying Heavy Earth Moving Machinery
Strike & Dip of the Deposit	NE & SW & Dip 3 – 5° towards SE direction.
Environmental Monitoring	Monitoring of Env. Parameters on Quarterly basis is in practice
Number of Benches	03
Reserves as on (1.4.2022)	119.127 Mill. Tons
111 Category	119.127 Million Tons
Production during (2021–22)	2525000 Tons
Quarry Length (North–South)	1780 m
Quarry Width (East–West)	555 m
Area Excavated	121.393 Hectares

Particulars	Details
Geology	
Dip	03° – 05°
Strike	NE – SW
Lithology	
Light grey (CaO %)	40 – 42
Grey (CaO %)	45 – 49
Green (CaO %)	43 – 45
Purple (CaO %)	38 – 40
No of working shifts	02
“A” Shift (Production)	05.00 AM to 01.00 PM
“G” Shift (Maintenance)	08.00 AM to 05.00 PM
“B” Shift (Production)	12.30 PM to 08.30 PM



# Details of Production and Man Power

S.No	Description	Sagar Cements Limestone Mine-1	Sagar Cements Limestone Mine-2
1	Name of The Agent	Shri. M.V.RAMANA MURTHY	Shri. M.V.RAMANA MURTHY
2	Name of The Manager	Shri. V.Subramanyam	Shri. V.V.Krishna Reddy
3	Man Power	Direct-33, Contractual-52	Direct-18, Contractual-16
4	Hours of Work	“A’ shift (5.00 AM to 01.00 PM), “B’ shift (12.30 PM to 08.30 PM) General Shift (8.00 AM – 5.00 PM)	“A’ shift (6.00 AM to 2.00 PM)
5	LIN	1-6521-9501-8	1-4146-3036-9
6	Mine Code	38 APR 14007	38 APR 14022
7	Type of Mine	Mechanized Open Cast	Mechanized Open Cast
8	Mineral	Lime Stone	Lime Stone
9	Production/day (MT)	10000	1000
10	Name of the Contractor	Manpower supply : Sri K. Chowder Reddy & Co	Mining Operation: Sri Padmavathi Venkateswara Transport



Total Lease area (Ha)	326.58
Break Up area (Ha)	
Forest Land (Ha)	Nil
Private Land (Ha)	130.036 Ha.
Revenue Land( Ha)	196.27 Ha.
Others, if any	Nil



Plantation along the Haul Road



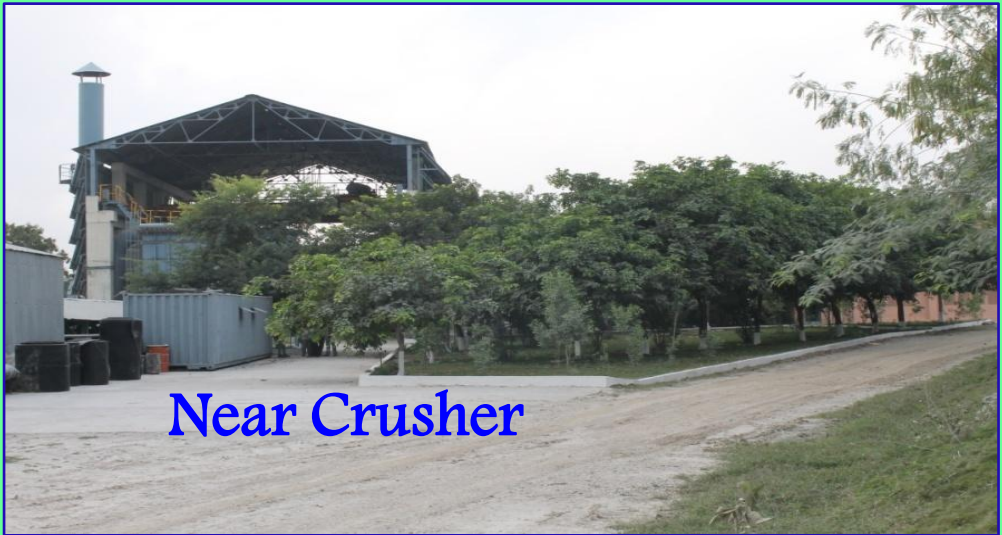
# View of Afforestation Within Mining Lease Area



lease Boundary



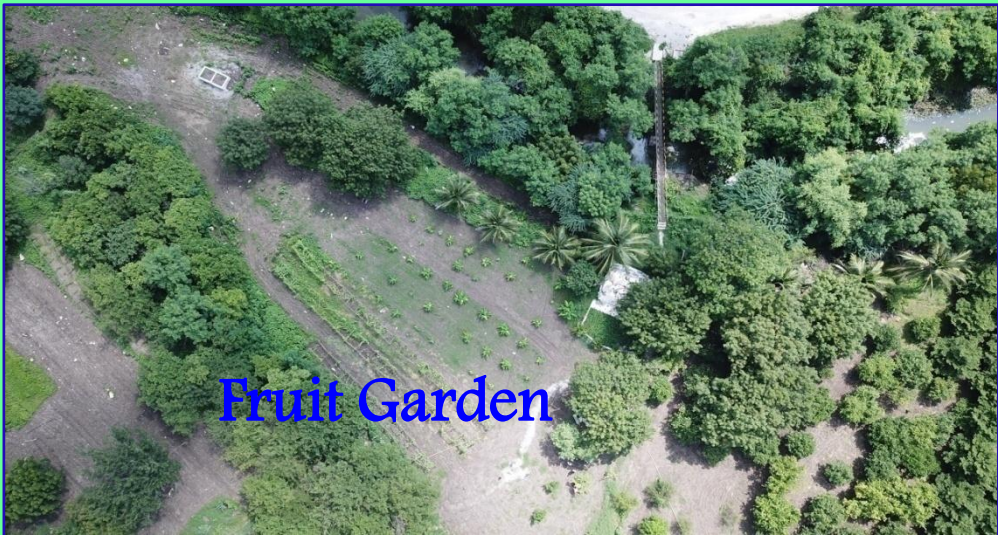
Along the Crusher Conveyor Belt



Near Crusher



Near Secondary Crusher



Fruit Garden



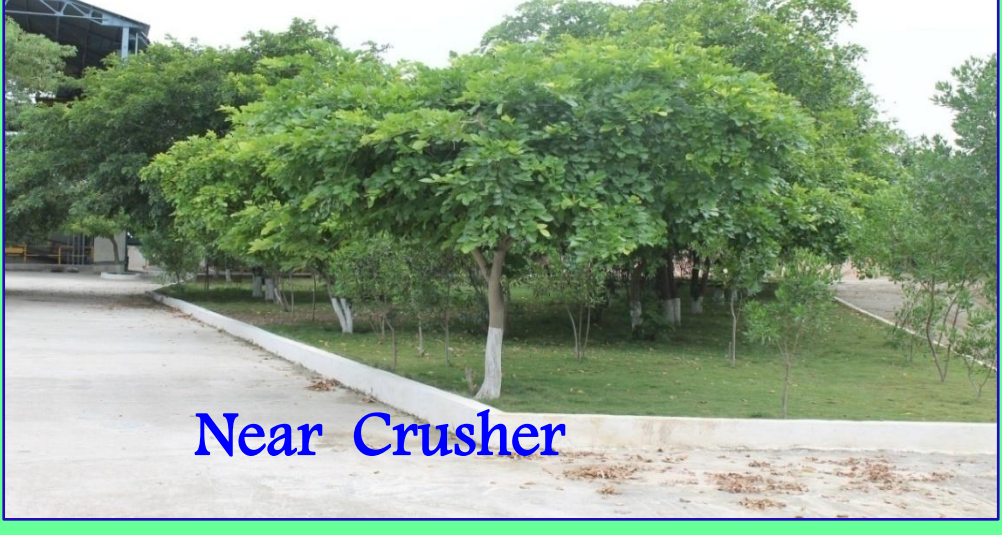
Near 40 KL HSD Bunk



Near AN Store Room



Along the Haul Road



Near Crusher







# Nursery & Fruit Garden being maintained by Sagar Cements Limited





# Park & Green Belt Development Near Temple in the colony



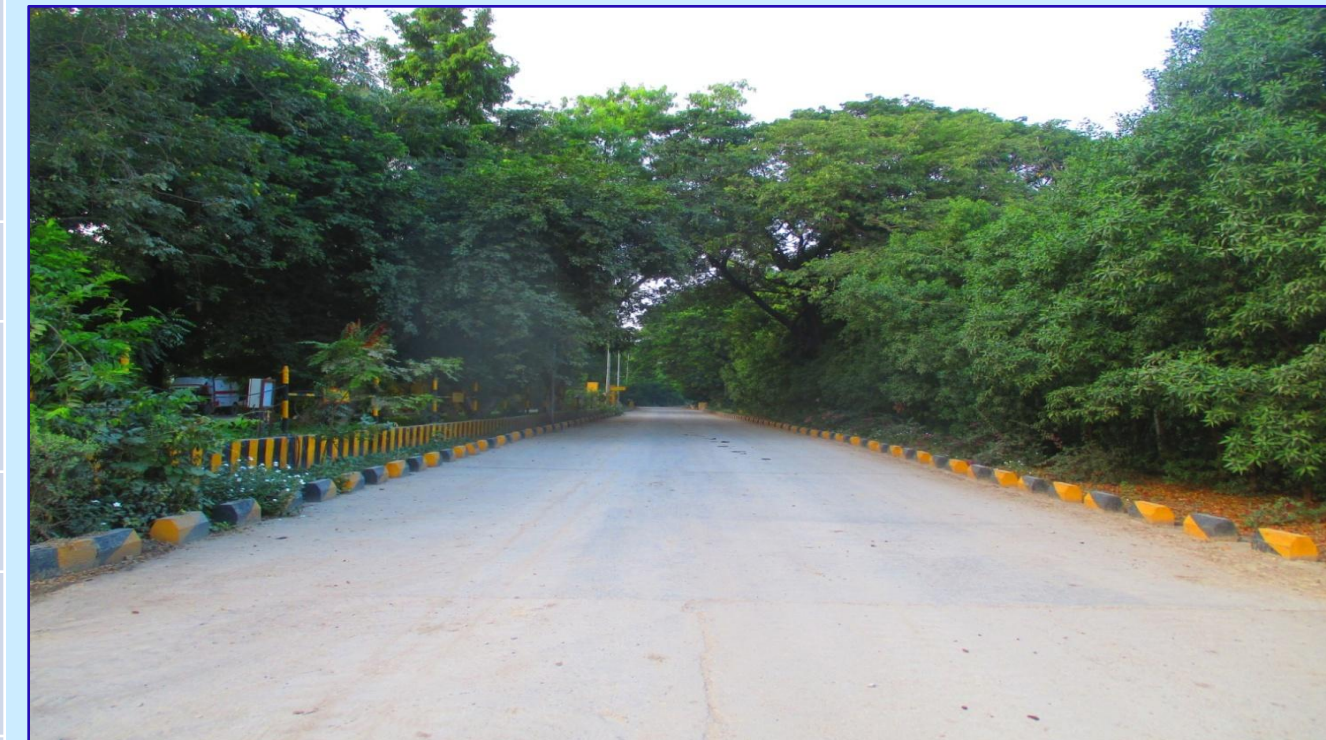


## Afforestation Within Mining Lease area

Acquired area in Ha	
Area under afforestation(in Ha) During 2021-22 Cumulative Upto 2021-22	1.0 Ha 93.97 Ha.
Number of trees planted During 2021-22 Cumulative Upto 2021-22	2500 Trees 219901 Trees
Number of Plants per Ha	2355 plants
House keeping including display of Plantation details	Good & Details of plantation were displayed at all the plantation locations.
Type of plant species	Nemalinara, Subabul, Dubai, neem etc.
Avenue Plantation	About 2 Ha. of area covered with avenue plantation.
Survival Rate	WML area - 86% & OML - 82%
Maintenance of nursery/Procurement of Saplings	Maintaining Nursery at plant premises.
Aftercare of saplings planted	Good



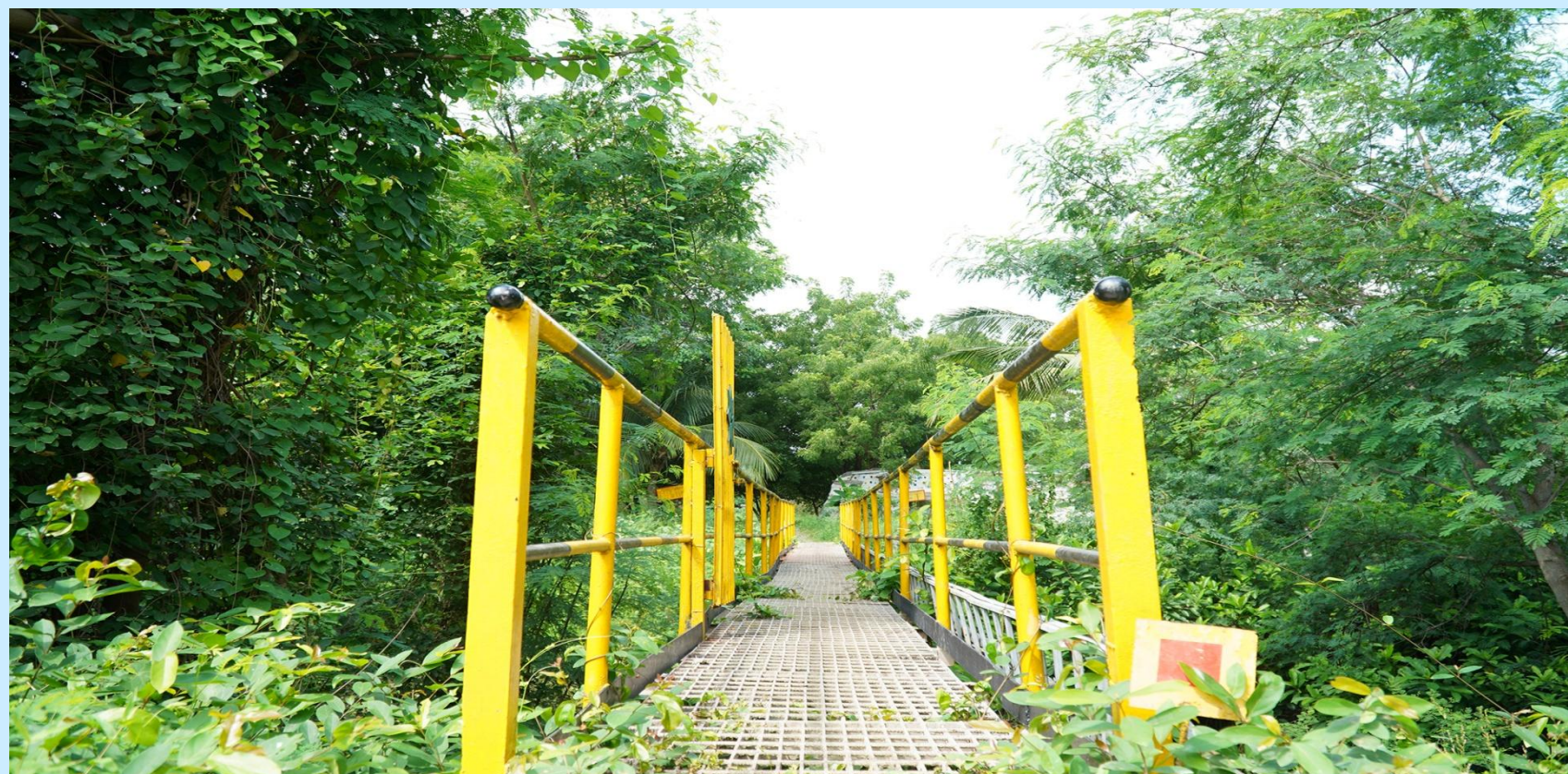
Neem Plantation within mining Lease area



Plantation along the road near Mines Office premises



# Afforestation Within Mining Lease Boundary & Safety barrier areas....





## Afforestation Outside Mining Lease

Acquire area in Ha	
Area under afforestation (in Ha) During 2021-22	Nil
Cumulative Upto 2021-22	131.998 Ha
Number of trees planted During 2021-22	Nil
Cumulative Upto 2021-22	3,30,290 Trees
Number of Plants per Ha	2500 Per/Ha
House keeping including display of Plantation details	Good & Details of plantation were displayed at all the location
Type of plant species	Nemalinara,Kanuga,Dubai,Subabul, Maddi, Neem , Rela etc...
Avenue Plantation	About 20 Ha. of area covered with avenue plantation
Survival Rate	80%
Maintenance of nursery/Procurement of Saplings	Maintaining Nursery at plant premises
Aftercare of saplings planted	Good.



Plantation near mines within MLB area



Plantation on 7.5m MLB Safety Barrier area



Thickness of top soil	0.5 to 5 mtrs.
Collection and storage During 2021-22	Nil
Production Cumulative Upto 2021-22	358742 Cu.Mtrs
Utilization During 2021-22	24500 Cu. Mtrs
Utilization Cumulative Upto 2021-22	358742 Cu.Mtrs



BC Soil Temporary Stock Yard



a) Proper design and Maintenance of waste dumps Terraces, dump slopes, drainage channel on Terraces, berms etc

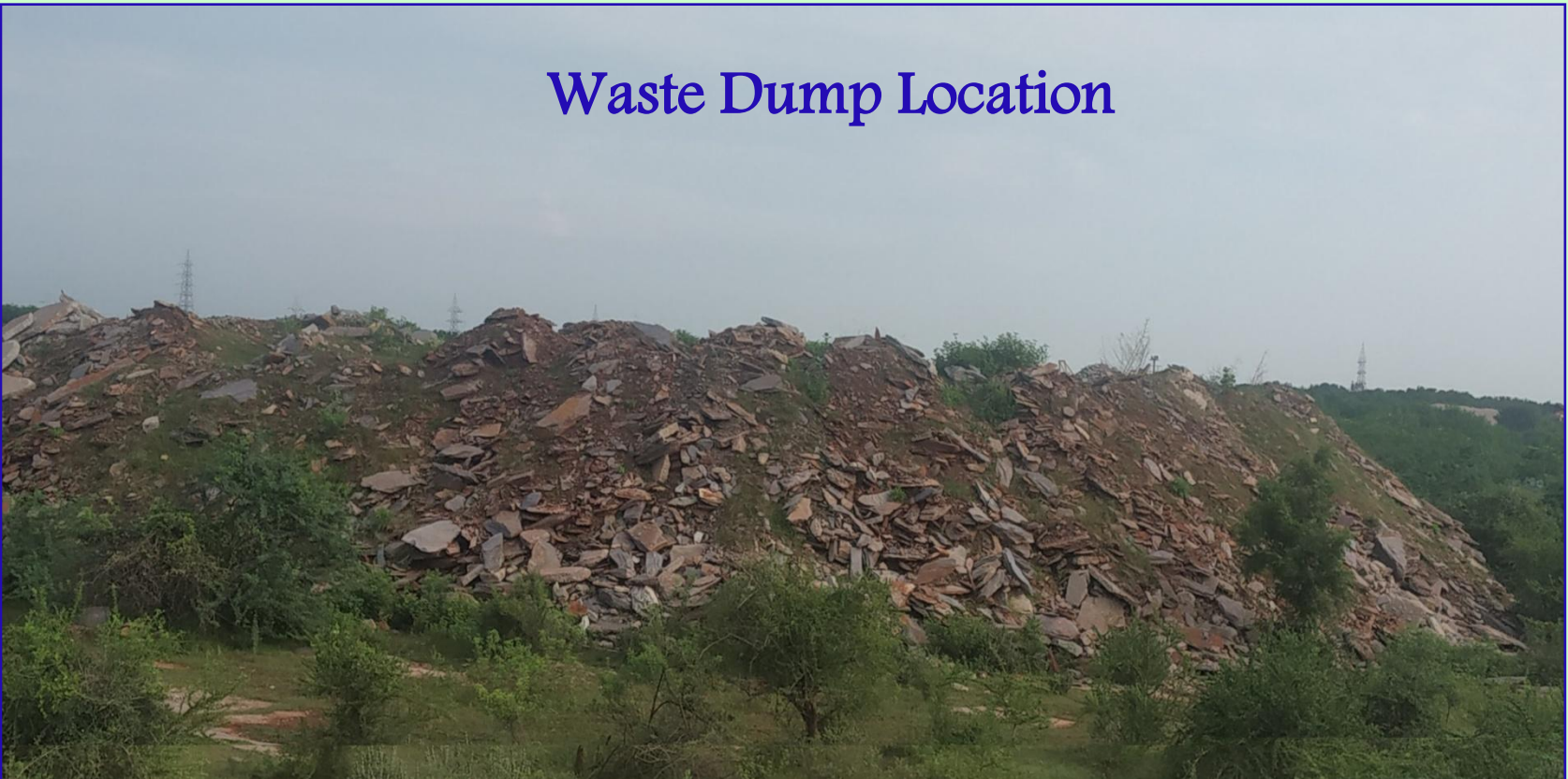
Waste Dump being maintained as per the statutory provisions.

b) Building & maintenance of check dams, Retention wall, pack wall, garland drains, Gully plugs, silt tank etc.

Being maintained as per the proposals made in the approved MMP.

c) Growing of grass, suitable plants on the Inactive dumps with or without geo-textile/ Coir matting

Developed aloe vera in the dump slopes of inactive dumps present.







Top View of Limestone Waste/OB Dump



Garland Drain



Check Dams





Aloe vera Plantation on Dump Slopes



Silt Settling Tanks constructed across the Garland Drain







S.No	Description	Make	Capacity	Nos	Location
1	PC-1250 Shovel ( Front End)	Komatsu	6.5M <sup>3</sup>	1	Mine-1
2	EC-950 Shovel (back Hoe)	Volvo	6.0 M <sup>3</sup>	1	Mine-1
3	CAT-988 Loader	CAT	6.9 M <sup>3</sup>	1	Mine-1
4	Dumpers	Komatsu	55 tons	5	Mine-1
5	Drill Machine	Epiroc and atlas copco	350 CFM and 300 CFM	3	Mine-1
6	Dozer	Komatsu	11.8 M <sup>3</sup>	1	Mine-1
7	Soil Compactor	Escort	33Hz	1	Mine-1
8	Back hoe with Rock Breaker	Volvo	0.9M <sup>3</sup>	1	Mine-1
9	Tippers	Bharat Benz	25 Tons	5	Mine-2
10	Back hoe Shovel	Tata Hitachi	0.9 M <sup>3</sup>	1	Mine-2





Komatsu HD 465 Dumper



Volvo Rock Breaker



Atlas Copco Drill Machine



Komatsu D 155 Dozer





**PC 1250, 6.5 Cu Mtr Bucket Front end shovel**



**CAT 988, 6.9 Cu Mtr Bucket Loader**



**Volvo, Back hoe 6.0 Cu Mtr bucket shovel**

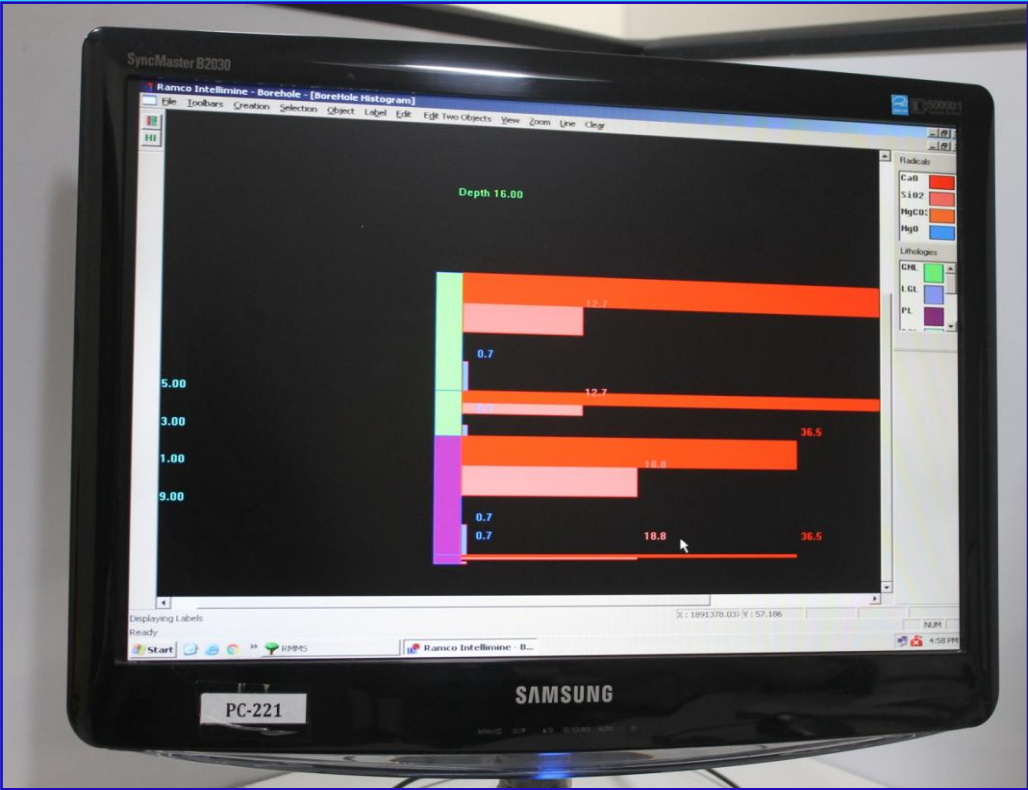
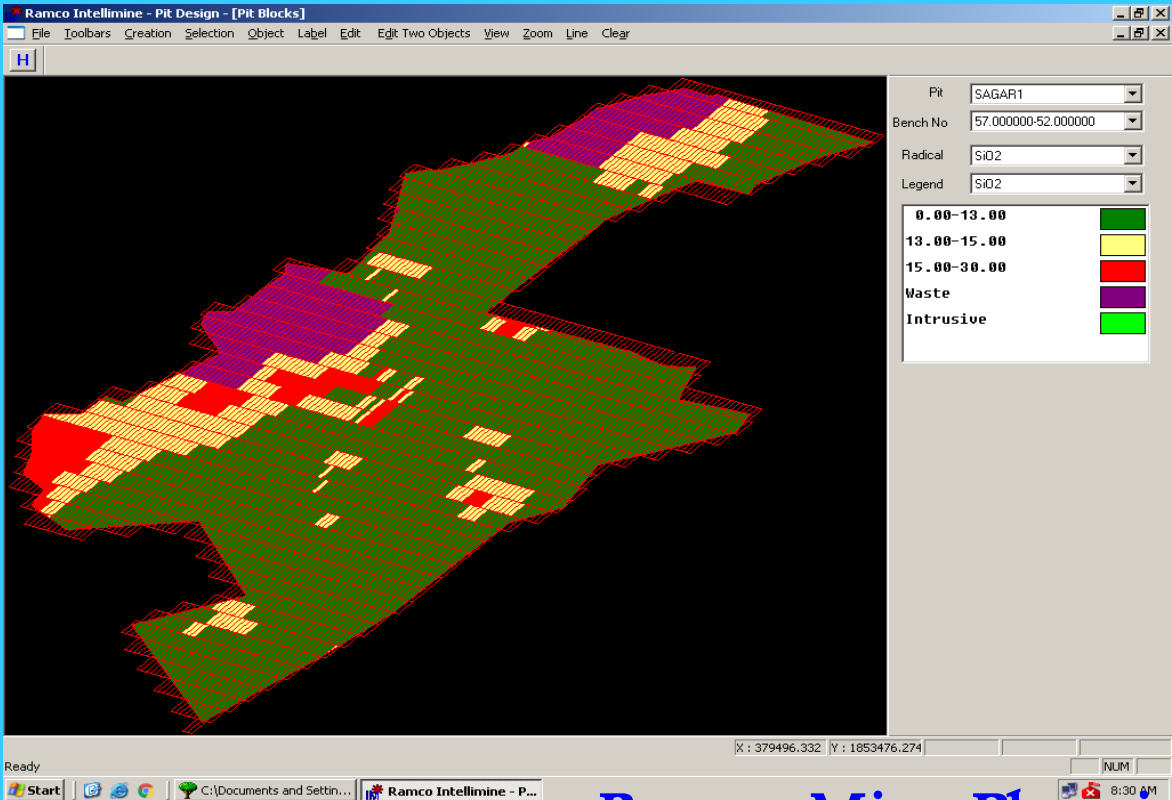




Core Drilling Machine CDR 100



Water Sprinkling on Haul Roads



Usage of mine pit water as drinking water





Systematic benches



Grease Trap Point



Humus preparation pit & application to plants



Mini Mate Blast Vibration Monitoring Machine.




# Systematic arrangement of Limestone Core Samples & Mine Model





**Ambient Air Quality Monitoring :-** AAQ is being monitored by M/s. Lawn Enviro Associates, Hyderabad at 10 locations of core and buffer zones of ML area once in a quarter as proposed in the approved SOM, all the parameters are well within the permissible Limit.



**LAWN ENVIRO ASSOCIATES**  
[Engineers & Consultants in Pollution Control]  
Recognised by Ministry of Environment Forest & Climate Change (MoEF & CC), GOI, New Delhi & Laboratory Accredited by NABL

ISO 9001, 14001 & 45001  
CERTIFIED COMPANY

TEST REPORT

REF.NO: LAWN/SCL-M/2022

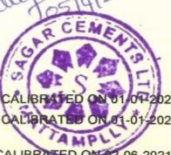
Date: 26-3-2022

AMBIENT AIR QUALITY DATA - CORE ZONE

Name of the Industry & Address

M/s. SAGAR CEMENTS LIMITED, (MINE-1)  
Mattampally (Post & Mandal),  
Suryapet - (Dist).

Location	Near Crusher	Near Dumping	LIMIT	PROTOCOL/METHOD
1. Date of sampling	16-2-2022	16-3-2022	--	---
2. Total time of monitoring	24 hr	24 hr	--	---
3. Average flow rate (cum/min)	1.13	1.06	--	---
4. Particulate matter Concentration (µg/m³) -PM <sub>10</sub>	64	69	<100	IS:5182 (Part-23); 2017 Gravimetric Method
5. Particulate matter Concentration (µg/m³) -PM <sub>2.5</sub>	24	28	<60	IS:5182 (Part-24); 2019 Gravimetric Method
6. Sulphur dioxide (SO <sub>2</sub> ) Concentration (µg/m³)	08	12	<80	IS:5182 (Part-2); 2018 New West & Gaeke Method
7. Nitrogen dioxide (NO <sub>2</sub> ) Concentration (µg/m³)	17	25	<80	IS:5182 (Part-6); 2017 JACOB & Hochheiser Method



AUTHORISED SIGNATORY

1. RESPIRABLE DUST SAMPLER MODEL / SL.NO. RDS 9000 / 060132, CALIBRATED ON 01-01-2022, DUE ON 31-12-2022

2. RESPIRABLE DUST SAMPLER MODEL / SL.NO. RDS 9000 / 040139, CALIBRATED ON 01-01-2022, DUE ON 31-12-2022


1. FINE PARTICULATE SAMPLER / APM 550 (SL.NO. 755-DTH-2011), CALIBRATED ON 02-06-2021, DUE ON 01-06-2022

2. FINE PARTICULATE SAMPLER / APM 550 (SL.NO. 1351-DTF-2013), CALIBRATED ON 02-06-2021, DUE ON 01-06-2022

Head Office : "LAWN HOUSE", #184-C, Vengalrao Nagar, Hyderabad - 500 038. (T.S.) INDIA. Tel : 040-66730925, 66730926, Fax : 040-66730926

Branch Office : D.No.31-58-103, MIG-71, Phase-7, Road No.4/4, Dwarakapuri Colony, Kurmanapallem, Vishakhapatnam-530046.Tel : 9701505182

E-mail : lawnenviro@yahoo.co.in, Website : www.lawnenviro.com



**LAWN ENVIRO ASSOCIATES**  
[Engineers & Consultants in Pollution Control]  
Recognised by Ministry of Environment Forest & Climate Change (MoEF & CC), GOI, New Delhi & Laboratory Accredited by NABL

ISO 9001, 14001 & 45001  
CERTIFIED COMPANY

TEST REPORT

REF.NO: LAWN/SCL-M/2022


Date: 26-3-2022

AMBIENT AIR QUALITY DATA - BUFFER ZONE

Name of the Industry & Address

M/s. SAGAR CEMENTS LIMITED, (MINES)  
Mattampally (Post & Mandal),  
Suryapet (Dist) - 508 204.

Location	Mattampally Village	Pedaveedu Village	LIMIT	PROTOCOL/METHOD
1. Date of sampling	14-3-2022	14-3-2022	--	---
2. Total time of monitoring	24 hr	24 hr	--	---
3. Average flow rate (cum/min)	1.04	1.12	--	---
4. Particulate matter Concentration (µg/m³) -PM <sub>10</sub>	59	66	<100	IS:5182 (Part-23); 2017 Gravimetric Method
5. Particulate matter Concentration (µg/m³) -PM <sub>2.5</sub>	20	25	<60	IS:5182 (Part-24); 2019 Gravimetric Method
6. Sulphur dioxide (SO <sub>2</sub> ) Concentration (µg/m³)	07	09	<80	IS:5182 (Part-2); 2018 New West & Gaeke Method
7. Nitrogen dioxide (NO <sub>2</sub> ) Concentration (µg/m³)	18	21	<80	IS:5182 (Part-6); 2017 JACOB & Hochheiser Method
8. CO, Concentration (ppm)	<1	<1	<2	IS:5182 (Part-10); 2019 CO Analyzer Method



AUTHORISED SIGNATORY

1. RESPIRABLE DUST SAMPLER MODEL / SL.NO. RDS 9000 / 040140, CALIBRATED ON 01-01-2022, DUE ON 31-12-2022

2. RESPIRABLE DUST SAMPLER MODEL / SL.NO. RDS 9000 / 040139, CALIBRATED ON 01-01-2022, DUE ON 31-12-2022


1. FINE PARTICULATE SAMPLER / APM 550 (SL.NO. 1354-DTF-2013), CALIBRATED ON 02-06-2021, DUE ON 01-06-2022

2. FINE PARTICULATE SAMPLER / APM 550 (SL.NO. 1351-DTF-2013), CALIBRATED ON 02-06-2021, DUE ON 01-06-2022

Head Office : "LAWN HOUSE", #184-C, Vengalrao Nagar, Hyderabad - 500 038. (T.S.) INDIA. Tel : 040-66730925, 66730926, Fax : 040-66730926

Branch Office : D.No.31-58-103, MIG-71, Phase-7, Road No.4/4, Dwarakapuri Colony, Kurmanapallem, Vishakhapatnam-530046.Tel : 9701505182

E-mail : lawnenviro@yahoo.co.in, Website : www.lawnenviro.com



**LAWN ENVIRO ASSOCIATES**  
[Engineers & Consultants in Pollution Control]  
Recognised by Ministry of Environment Forest & Climate Change (MoEF & CC), GOI, New Delhi & Laboratory Accredited by NABL

ISO 9001, 14001 & 45001  
CERTIFIED COMPANY

TEST REPORT

REF.NO: LAWN/SCL-M/2022


Date: 26-3-2022

AMBIENT AIR QUALITY DATA - CORE ZONE

Name of the Industry & Address

M/s. SAGAR CEMENTS LIMITED, (MINES)  
Mattampally (Post & Mandal),  
Suryapet (Dist) - 508 204.

Location	Near Haulage Road	Near Mines Office	LIMIT	PROTOCOL/METHOD
1. Date of sampling	18-3-2022	18-3-2022	--	---
2. Total time of monitoring	24 hr	24 hr	--	---
3. Average flow rate (cum/min)	1.04	1.14	--	---
4. Particulate matter Concentration (µg/m³) -PM <sub>10</sub>	65	59	<100	IS:5182 (Part-23); 2017 Gravimetric Method
5. Particulate matter Concentration (µg/m³) -PM <sub>2.5</sub>	25	23	<60	IS:5182 (Part-24); 2019 Gravimetric Method
6. Sulphur dioxide (SO <sub>2</sub> ) Concentration (µg/m³)	12	07	<80	IS:5182 (Part-2); 2018 New West & Gaeke Method
7. Nitrogen dioxide (NO <sub>2</sub> ) Concentration (µg/m³)	24	22	<80	IS:5182 (Part-6); 2017 JACOB & Hochheiser Method
8. CO, Concentration (ppm)	<1	<1	<2	IS:5182 (Part-10); 2019 CO Analyzer Method



AUTHORISED SIGNATORY

1. RESPIRABLE DUST SAMPLER MODEL / SL.NO. RDS 9000 / 040139, CALIBRATED ON 01-01-2022, DUE ON 31-12-2022

2. RESPIRABLE DUST SAMPLER MODEL / SL.NO. RDS 9000 / 040140, CALIBRATED ON 01-01-2022, DUE ON 31-12-2022

1. FINE PARTICULATE SAMPLER / APM 550 (SL.NO. 1351-DTF-2013), CALIBRATED ON 02-06-2021, DUE ON 01-06-2022

2. FINE PARTICULATE SAMPLER / APM 550 (SL.NO. 1354-DTF-2013), CALIBRATED ON 02-06-2021, DUE ON 01-06-2022

Head Office : "LAWN HOUSE", #184-C, Vengalrao Nagar, Hyderabad - 500 038. (T.S.) INDIA. Tel : 040-66730925, 66730926, Fax : 040-66730926

Branch Office : D.No.31-58-103, MIG-71, Phase-7, Road No.4/4, Dwarakapuri Colony, Kurmanapallem, Vishakhapatnam-530046.Tel : 9701505182

E-mail : lawnenviro@yahoo.co.in, Website : www.lawnenviro.com



**Surface Water Quality & Ground Water Quality:-** Water Quality is being monitored by M/s. Lawn Environ Associates, Hyderabad at 3 locations with in the ML area and all the parameters are well with in the permissible Limits.

**LAWN ENVIRO ASSOCIATES**  
[Engineers & Consultants in Pollution Control]  
Recognised by Ministry of Environment Forest & Climate Change (MoEF & CC), GOI, New Delhi  
& Laboratory Accredited by NABL

ISO 9001, 14001 & 45001  
CERTIFIED COMPANY

**TEST REPORT**

REF.NO: LAWN/SCL-M/2022 Date: 26-3-2022

**WATER ANALYSIS**

Name of the Industry & Address : **M/s. SAGAR CEMENTS LIMITED, (MINES),**  
Mattampally (Post & Mandal),  
Suryapet (Dist) - 508 204.

Sample Particular : Drinking Water  
Date of Collection : 19-3-2022  
Date of Analysis : 20-3-2022  
PROTOCOL : A.P.H.A 23<sup>rd</sup> Edition

		As per IS:10500 - 2012	
		Requirement (Acceptable Limit)	Permissible Limit in the absence of alternate source
1. pH	: 7.60	6.50 - 8.50	No relaxation
2. Colour (Hazen)	: <5	5max	15max
3. Temperature °C	: 28	--	--
4. E.C (micromhos/cm)	: 153	--	--
5. Turbidity (NTU)	: <1.0	01 max	05 max
6. Total dissolved solids	: 85	500 max	2000 max
7. Phenolphthalein alkalinity as CaCO <sub>3</sub>	: Nil	--	--
8. Methyl orange alkalinity as CaCO <sub>3</sub>	: 53	--	--
9. Total hardness as CaCO <sub>3</sub>	: 17	200 max	600 max
10. Calcium as Ca	: 5.20	75 max	200 max
11. Magnesium as Mg	: 0.95	30 max	100 max
12. Sodium as Na	: 26	--	--
13. Potassium as K	: 1.28	--	--
14. Chloride as Cl	: 11.57	250 max	1000 max
15. Sulphate as SO <sub>4</sub>	: 3.73	200 max	400 max
16. Nitrates as NO <sub>3</sub>	: 1.35	45 max	No relaxation
17. Iron as Fe	: 0.08	0.3 max	No relaxation
18. Fluorides as F	: 0.12	1.0 max	1.5 max
19. Total Coliform, MPN/10ml	: Absent	Absent	--
20. Chemical oxygen demand	: <5.0	--	--
21. Biochemical oxygen demand (3 days at 27 °C)	: <1.0	--	--

Note : All the values except pH & E.C. are expressed in mg/L.

**AUTHORISED SIGNATORY**

Head Office : "LAWN HOUSE", #184-C, Vengalrao Nagar, Hyderabad - 500 038. (T.S.) INDIA. Tel : 040-66730925, 66730926, Fax : 040-66730926  
Branch Office : D.No.31-58-103, MIG-71, Phase-7, Road No.4/4, Dwarakapuri Colony, Kurmanapallem, Vishakhapatnam-530046.Tel : 9701505182  
E-mail : lawnenviro@yahoo.co.in, Website : www.lawnenviro.com

**LAWN ENVIRO ASSOCIATES**  
[Engineers & Consultants in Pollution Control]  
Recognised by Ministry of Environment Forest & Climate Change (MoEF & CC), GOI, New Delhi  
& Laboratory Accredited by NABL

ISO 9001, 14001 & 45001  
CERTIFIED COMPANY

**TEST REPORT**

REF.NO: LAWN/SCL-M/2022 Date: 26-3-2022

**WATER ANALYSIS**

Name of the Industry & Address : **M/s. SAGAR CEMENTS LIMITED, (MINES),**  
Mattampally (Post & Mandal),  
Suryapet (Dist) - 508 204.

Sample Particular : Bore well (Mines)  
Date of Collection : 19-3-2022  
Date of Analysis : 20-3-2022  
PROTOCOL : A.P.H.A 23<sup>rd</sup> Edition

1. pH	: 7.54
2. Colour (Hazen)	: Nil
3. Temperature °C	: 29
4. E.C (micromhos/cm)	: 902
5. Turbidity (NTU)	: <1.0
6. Total dissolved solids	: 537
7. Phenolphthalein alkalinity as CaCO <sub>3</sub>	: Nil
8. Methyl orange alkalinity as CaCO <sub>3</sub>	: 197
9. Total hardness as CaCO <sub>3</sub>	: 170
10. Calcium as Ca	: 47
11. Magnesium as Mg	: 12.77
12. Sodium as Na	: 107
13. Potassium as K	: 11.90
14. Chloride as Cl	: 58
15. Sulphate as SO <sub>4</sub>	: 25
16. Nitrates as NO <sub>3</sub>	: 18
17. Iron as Fe	: 0.19
18. Fluorides as F	: 0.72
19. Total Coliform, MPN/10ml	: Nil
20. Chemical oxygen demand	: 21
21. Biochemical oxygen demand (3 days at 27 °C)	: <1.0

Note : All the values except pH & E.C. are expressed in mg/L.

**AUTHORISED SIGNATORY**

Head Office : "LAWN HOUSE", #184-C, Vengalrao Nagar, Hyderabad - 500 038. (T.S.) INDIA. Tel : 040-66730925, 66730926, Fax : 040-66730926  
Branch Office : D.No.31-58-103, MIG-71, Phase-7, Road No.4/4, Dwarakapuri Colony, Kurmanapallem, Vishakhapatnam-530046.Tel : 9701505182  
E-mail : lawnenviro@yahoo.co.in, Website : www.lawnenviro.com

**LAWN ENVIRO ASSOCIATES**  
[Engineers & Consultants in Pollution Control]  
Recognised by Ministry of Environment Forest & Climate Change (MoEF & CC), GOI, New Delhi  
& Laboratory Accredited by NABL

ISO 9001, 14001 & 45001  
CERTIFIED COMPANY

**TEST REPORT**

REF.NO: LAWN/SCL-M/2022 Date: 26-3-2022

**WATER ANALYSIS**

Name of the Industry & Address : **M/s. SAGAR CEMENTS LIMITED, (MINE-1)**  
Mattampally (Post & Mandal),  
Suryapet - (Dist).

Sample Particular : Near Nalla Exit MLB  
Date of Collection : 18-3-2022  
Date of Analysis : 19-3-2022  
PROTOCOL : A.P.H.A 23<sup>rd</sup> Edition

1. pH	: 7.67
2. EC (Micro Siemens /cm)	: 728
3. Turbidity (NTU)	: <1.0
4. Total Dissolved solids	: 413
5. Total Alkalinity as CaCO <sub>3</sub>	: 116
6. Phenolphthalein alkalinity as CaCO <sub>3</sub>	: Nil
7. Methyl orange alkalinity as CaCO <sub>3</sub>	: 116
8. Total hardness as CaCO <sub>3</sub>	: 163
9. Calcium as Ca	: 52
10. Magnesium as Mg	: 7.62
11. Sodium as Na	: 80
12. Potassium as K	: 2.05
13. Iron as Fe	: 0.24
14. Chloride as Cl	: 127
15. Sulphates as SO <sub>4</sub>	: 38
16. Nitrates as NO <sub>3</sub>	: 14
17. Fluorides as F	: 0.75

Note : All the values except pH & E.C. are expressed in mg/L.

**AUTHORISED SIGNATORY**

Head Office : "LAWN HOUSE", #184-C, Vengalrao Nagar, Hyderabad - 500 038. (T.S.) INDIA. Tel : 040-66730925, 66730926, Fax : 040-66730926  
Branch Office : D.No.31-58-103, MIG-71, Phase-7, Road No.4/4, Dwarakapuri Colony, Kurmanapallem, Vishakhapatnam-530046.Tel : 9701505182  
E-mail : lawnenviro@yahoo.co.in, Website : www.lawnenviro.com



**Noise Level Monitoring Details:-** Noise Levels Monitoring is being conducted by M/s. Lawn Environ Associates, Hyderabad, at 10 Mining Locations once in a quarter and Noise Levels are within the permissible limits.

**TEST REPORT**

REF.NO: LAWN/SCL-M/2022

Date: 26-3-2022

**AMBIENT NOISE LEVELS DATA**

Name of the Industry & Address : **M/s. SAGAR CEMENTS LIMITED, (MINE-1)**  
Mattampally (Post & Mandal),  
Suryapet - (Dist).

Location	Levels in dB (A) - Leq	
	Day time	Night time
1. North – East side of boundary	63	58
2. South – West side of boundary	62	57

Note: 1. Noise levels monitoring conducted on 17-3-2022.  
2. Instrument make - Lutron SL - 4001 / G-49271, Calibrated on 23-02-2022, Due on 22-02-2023.  
3. Day time is reckoned in between 6.0 am and 10.0 pm; Limit <75 dB (A)  
4. Night time is reckoned in between 10.0 pm and 6.0 am; Limit <70 dB (A).

  
AUTHORIZED SIGNATORY



Head Office : "LAWN HOUSE", #184-C, Vengalrao Nagar, Hyderabad - 500 038, (T.S.) INDIA. Tel : 040-66730925, 66730926, Fax : 040-66730926  
Branch Office : D.No.31-58-103, MIG-71, Phase-7, Road No.4/4, Dwarakapuri Colony, Kurmanapallem, Vishakhapatnam-530046.Tel : 9701505182  
E-mail : lawnenviro@yahoo.co.in, Website : www.lawnenviro.com

**TEST REPORT**

REF.NO: LAWN/SCL-M/2022

Date: 26-3-2022

**AMBIENT NOISE LEVELS DATA**

Name of the Industry & Address : **M/s. SAGAR CEMENTS LIMITED, (MINE-1)**  
Mattampally (Post & Mandal),  
Suryapet - (Dist).

Location	Levels in dB (A) - Leq	
	Day time	Night time
SE ML Boundary	65	60

Note: 1. Noise levels monitoring conducted on 17-3-2022.  
2. Instrument make - Lutron SL - 4001 / G-49271, Calibrated on 23-02-2022, Due on 22-02-2023.  
3. Day time is reckoned in between 6.0 am and 10.0 pm; Limit <75 dB (A)  
4. Night time is reckoned in between 10.0 pm and 6.0 am; Limit <70 dB (A).

  
AUTHORIZED SIGNATORY



Head Office : "LAWN HOUSE", #184-C, Vengalrao Nagar, Hyderabad - 500 038, (T.S.) INDIA. Tel : 040-66730925, 66730926, Fax : 040-66730926  
Branch Office : D.No.31-58-103, MIG-71, Phase-7, Road No.4/4, Dwarakapuri Colony, Kurmanapallem, Vishakhapatnam-530046.Tel : 9701505182  
E-mail : lawnenviro@yahoo.co.in, Website : www.lawnenviro.com

**TEST REPORT**

REF.NO: LAWN/SCL-M/2022

Date: 26-3-2022

**SOIL ANALYSIS**

Name of the Industry & Address : **M/s. SAGAR CEMENTS LIMITED, (MINES),**  
Mattampally (Post & Mandal),  
Suryapet (Dist) - 508 204.

Sample Particulars : Soil Analysis  
Date of Collection : 19-3-2022  
Date of Analysis : 20-3-2022

	I*	II*
1. pH (1:2 Soil Water Extract)	7.30	7.64
2. E.C (micro mhos) (1:2 soil water extract)	304	382
3. Free ammonia as N (mg/kg)	Nil	Nil
4. Ammonical Nitrogen as N (mg/kg)	10	24
5. Potassium as K <sub>2</sub> O (mg/kg)	81	116
6. Phosphorous as P <sub>2</sub> O <sub>5</sub> (mg/kg)	12	8.69
7. Organic matter (%)	0.46	0.56
8. Heavy Metals		
a) Copper (Total) as Cu (mg/kg)	1.10	1.26
b) Lead (Total) as Pb (mg/kg)	0.62	0.69
c) Cadmium (Total) as Cd (mg/kg)	0.11	0.09
d) Hexavalent Chromium as Cr <sup>6+</sup>	Absent	Absent
9. Soil Characteristics		
a) Texture	Silty Sand	Silty Sand
b) Particle size analysis		
i) Sand (%)	51	53
ii) Silt (%)	39	36
iii) Clay (%)	10	11
10. Water Holding Capacity (%)	26	35

Note: \*I. Core zone (Mines)  
\*II. Buffer zone (Gundlupally)  
The sample was collected at a depth of 45 cm




  
AUTHORIZED SIGNATORY

Head Office : "LAWN HOUSE", #184-C, Vengalrao Nagar, Hyderabad - 500 038, (T.S.) INDIA. Tel : 040-66730925, 66730926, Fax : 040-66730926  
Branch Office : D.No.31-58-103, MIG-71, Phase-7, Road No.4/4, Dwarakapuri Colony, Kurmanapallem, Vishakhapatnam-530046.Tel : 9701505182  
E-mail : lawnenviro@yahoo.co.in, Website : www.lawnenviro.com



**Ground vibration & Free Silica:-** Ground Vibration Monitoring is being done by Sagar Cements Limited for each blsting with the Mini Mate Instrument all the Vibration levels recorded are well with in the permissible limits of statutory guidelines. Air Borne dust and free silica analysis report is being monitored once in a year at 5 locations and silica levels are within the permissible limits.



**LAWN ENVIRO ASSOCIATES**  
[Engineers & Consultants in Pollution Control]  
Recognised by Ministry of Environment Forest & Climate Change (MoEF & CC), GOI, New Delhi  
& Laboratory Accredited by NABL

ISO 9001, 14001 & 45001  
CERTIFIED COMPANY

TEST REPORT

REF.NO: LAWN/SCL-M/2022

Date: 26-3-2022

**AIR BORNE DUST & FREE SILICA ANALYSIS**

Name of the Industry &: **SAGAR CEMENTS LIMESTONE MINE-1 OF M/s. SAGAR CEMENTS LTD.,**  
Address Pedaveedu Village, Mattampally,  
Suryapet (Dist) - 508 204.

Sampling Date : 16-3-2022

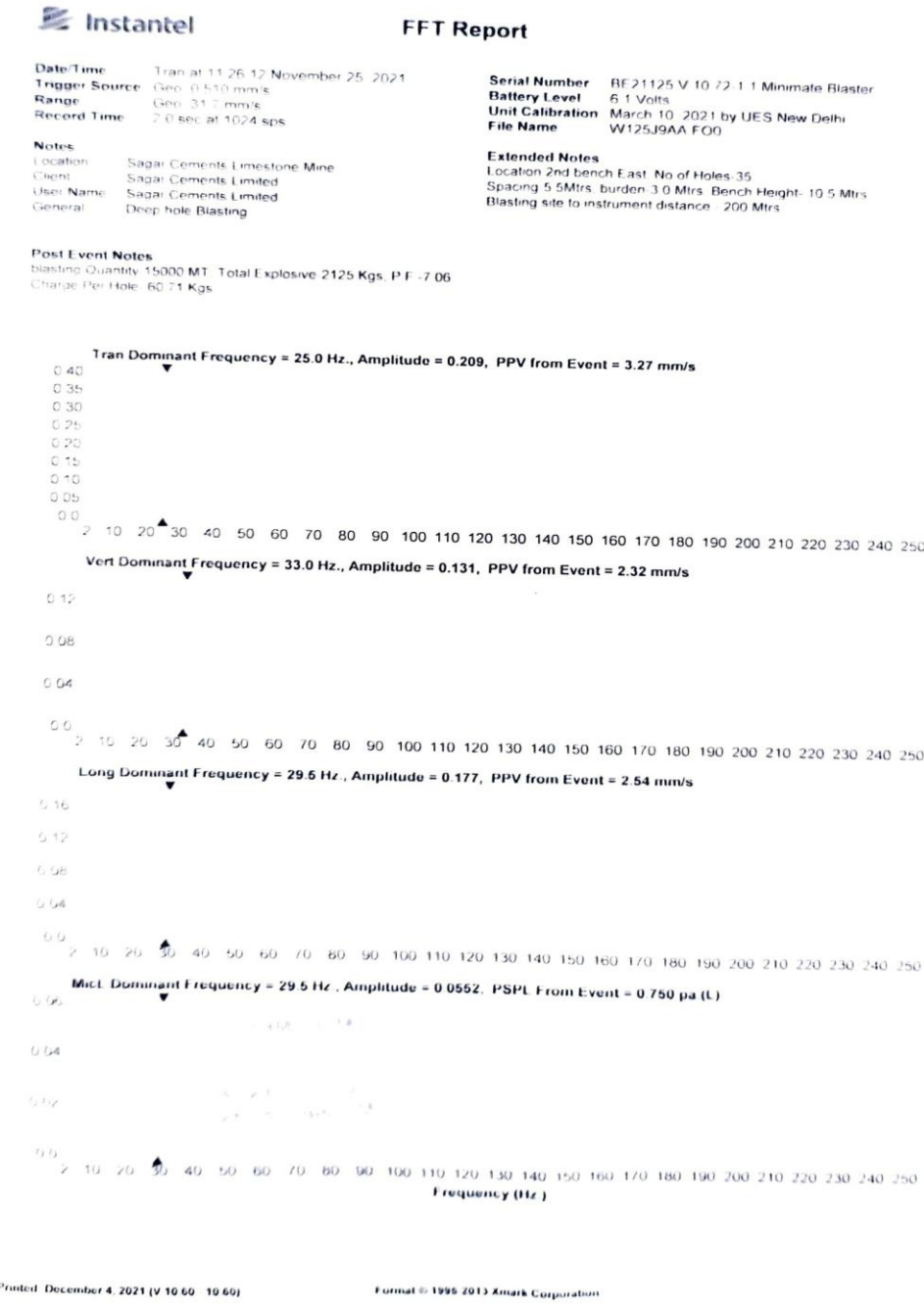
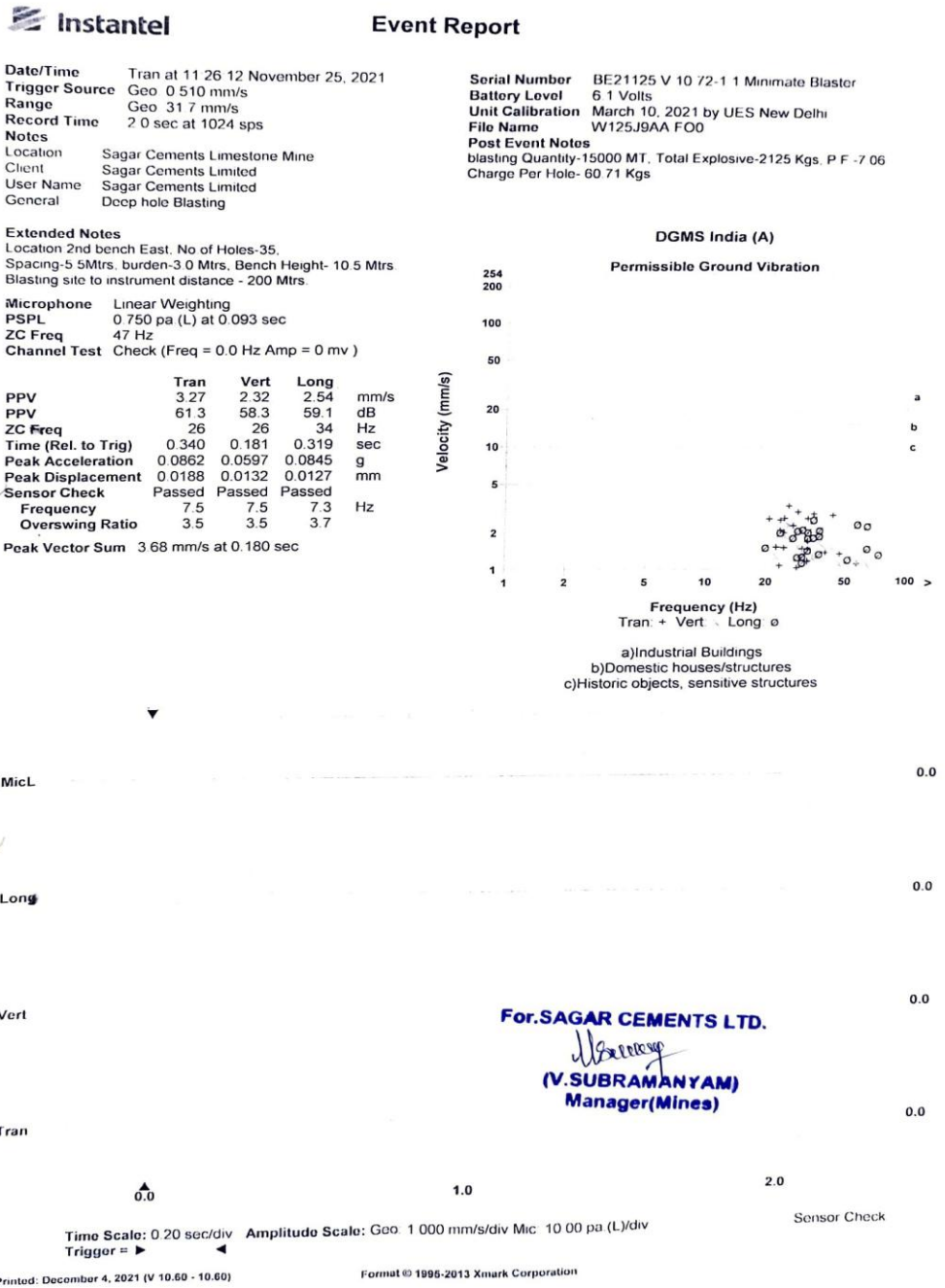
Sl.No.	Location	Operation	Dust Concentration (mg/m <sup>3</sup> )	Limit (mg/m <sup>3</sup> )	Free Silica Content (%)	Limit (%)
1	Drilling (2 <sup>nd</sup> Bench SE Face)	Mr. Rapolu Ramesh ID NO: 80025	1.20	3.0	Not Detected	5.0
2	Drilling (2 <sup>nd</sup> Bench North Face)	Mr. S. Shiva ID No: 80284	0.80		Not Detected	
3	Loading Area	Mr. D. Dayaker Reddy ID No: 10080	1.30		Not Detected	
4	Transportation	Mr. P. Giridhar Reddy ID No: 80061	0.69		Not Detected	
5	Near Crusher	Mr. T. Venkata Ramulu ID NO: 80103	0.60		Not Detected	

Model No : APM 800  
Make : ENVIROTECH Instruments Pvt.Ltd.,  
Serial number : 914-DTA-2015  
Calibration On : 04-6-2021  
Calibration due On : 03-6-2022

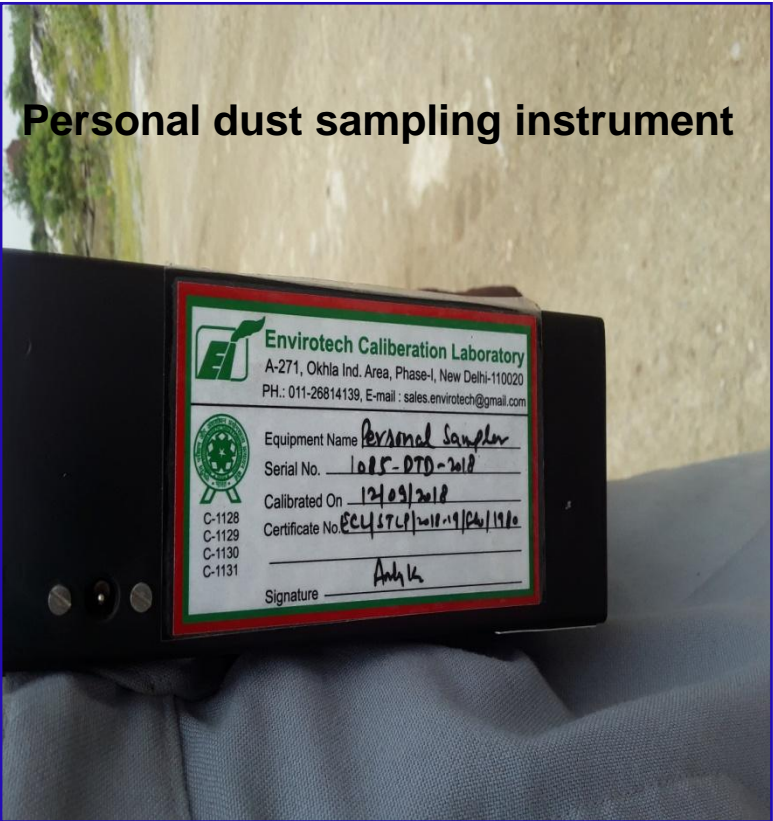
Model No : APM 800  
Make : ENVIROTECH Instruments Pvt.Ltd.,  
Serial number : 914-DTA-2013  
Calibration On : 04-6-2021  
Calibration due On : 03-6-2022

Head Office : "LAWN HOUSE", #184-C, Vengalrao Nagar, Hyderabad - 500 038, (T.S.) INDIA, Tel : 040-66730925, 66730926, Fax : 040-66730926  
Branch Office : D.No.31-58-103, MIG-71, Phase-7, Road No.4/4, Dwarakapuri Colony, Kurmanapalem, Vishakhapatnam-530046.Tel : 9701505182  
E-mail : lawnnenviro@yahoo.co.in, Website : www.lawnnenviro.com

AUTHORISED SIGNATORY











Check dam



Mine sump water



Roof top water harvesting pit



Bore water level measuring



Haul road wetting



Roof water harvesting pit



# Plantation & Cleaning in the ML area under Swatchhta Pakhwada





Awareness on cleanliness among Sagar School Children under Swatchhta Pakhwada





## సాగర్ సిమెంట్స్ లో మొక్కల నాటింపు

మతంపల్లి నవంబర్ 28 : స్వచ్ఛ పక్వాడ కార్యక్రమంలో భాగంగా ఆదివారం మండల కేంద్రంలోని సాగర్ సిమెంట్స్ పరిశ్రమ ఆవరణలో సంస్థ ప్రతినిధులు మొక్కలు నాటారు. సంస్థ ఉద్యోగులందరికీ స్వచ్ఛత, పారిశుధ్యంపై అవగాహన కల్పించి, ఆరోగ్య కిట్లు పంపిణీ చేశారు. పరిశ్రమ ఆవరణను పరిశుభ్రంగా ఉంచేందుకు ప్రతి ఒక్కరూ సహకరించాలని కోరారు. ఉద్యోగులు, సిబ్బంది పాల్గొన్నారు.



సాగర్ సిమెంట్ పరిశ్రమ ఆవరణలో మొక్కలు నాటిన  
సంస్థ ప్రతినిధులు, ఉద్యోగులు

## పరిసరాల పరిశుభ్రం ఇంటింటా మరుగుదాడ్లి ప్రతి ఒక్కరి కర్తవ్యం ఊరంతా ఆరాగ్యం

స్వచ్ఛ భారత అభియన్  
మైనింగ్ రంగంలో స్వచ్ఛత పథ్వాడ

SAGAR CEMENTS LIMESTONE MINE  
SAGAR CEMENTS LTD., MATTAMPALLY

స్వచ్ఛ భారత అభియన్  
మైనింగ్ రంగంలో స్వచ్ఛత పథ్వాడ

SAGAR CEMENTS LIMESTONE MINE  
SAGAR CEMENTS LTD., MATTAMPALLY

## సెల్ ఫోన్ కేంపీ తాండర్ తిండికెండుకు తాండర్ మరుగుదాడ్లి కట్టు ముందర్ సబ్బుతో చేయి కడుగు ముందర్

స్వచ్ఛ భారత అభియన్  
మైనింగ్ రంగంలో స్వచ్ఛత పథ్వాడ

SAGAR CEMENTS LIMESTONE MINE  
SAGAR CEMENTS LTD., MATTAMPALLY

స్వచ్ఛ భారత అభియన్  
మైనింగ్ రంగంలో స్వచ్ఛత పథ్వాడ

SAGAR CEMENTS LIMESTONE MINE  
SAGAR CEMENTS LTD., MATTAMPALLY

## Wash Your Hands After...

- 1** **Playing with pets**
- 2** **Using the bathroom**
- 3** **Sneezing, blowing your nose & coughing**
- 4** **Touching a cut or open sore**
- 5** **Playing outside**
- 6** **AND Before... Eating**

స్వచ్ఛ భారత అభియన్  
మైనింగ్ రంగంలో స్వచ్ఛత పథ్వాడ



SAGAR CEMENTS LIMESTONE MINE  
SAGAR CEMENTS LTD., MATTAMPALLY

## మీ మరుగు దొడ్డిని ఎలా ఉపయోగించాలి



మరి విస్తృతము ముందు ఒక లీటరు నీటితో "హెన్" ను తడి చేయాలి

"హెన్" కు అనుగుణంగా కూర్చోవాలి



మరి విస్తృత తరువాత మరుగు దొడ్డిని నీటితో కడగాలి. మలము నీటి నీలును దాచినదా అని గమనించాలి.

మీ చేతులను నబ్బు, బూడిద లేదా మట్టితో కడగాలి.



మీ మరుగు దొడ్డిని శుభ్రంగా ఉంచుకోవాలి.

మరుగు దొడ్డిని ఉపయోగించిన తరువాత తలుపు మూసి వేయాలి.

స్వచ్ఛ భారత అభియన్  
మైనింగ్ రంగంలో స్వచ్ఛత పథ్వాడ

SAGAR CEMENTS LIMESTONE MINE  
SAGAR CEMENTS LTD., MATTAMPALLY





సాగర్ సిమెంట్స్ లిమిటెడ్: మట్టంపల్లి

ప్రతిజ్ఞ

## స్వచ్ఛత యే సేవ - నావంతు కర్తవ్యం

మహాత్మా గాంధీజీ కన్న కలలు స్వచ్ఛమైన, నూతన భారతదేశ నిర్మాణం కోరకు  
మరియు ప్లాస్టిక్ రహిత నవభారతావన్ని నిర్మిమించడం కోరకు ప్లాస్టిక్  
వ్యర్థాల సేకరణ వంటి అవగాహన కార్యక్రమాలు స్వచ్ఛత యే సేవ ఉద్యమంలో  
నావంతు కర్తవ్యం నిర్వహిస్తానని, నేను పరిశుభ్రంగా ఉండటంతో పాటు, పరిసరాల  
పరిశుభ్రతకోసం కోంత సమయం కేటాయిస్తానని, ప్లాస్టిక్ కవర్లు, బాటిల్స్ వంటి  
వస్తువులు వాడనని, వాడిన ప్లాస్టిక్ ని సక్రమంగా రీసైక్లింగ్ చేయుటకు  
సహకరిస్తానని, నాతోటి వారికి కూడ అవగాహన కల్పిస్తానని, నా గ్రామంలో,  
నా పాఠశాలలో, నా సంస్థలో నేను పరిశుభ్రతను పాటిస్తూ, నాతోటి వారుకూడ ప్లాస్టిక్  
వాడకుండా అవగాహన కల్పిస్తానని, ప్లాస్టిక్ యతర వస్తువులు వాడేటట్లు, ప్లాస్టిక్  
సమర్థవంతనిర్వహణ పద్ధతులు పాటించేలా నావంతు కర్తవ్యం నిర్వహిస్తానని,  
ప్లాస్టిక్ రహిత భారతదేశాన్ని నిర్మిద్దాం అని ప్రతిజ్ఞ చేయుచున్నాను.

Pamphlets published by company to create awareness on Swatchta hi Seva among employees .



# House keeping near mines office workers colony during Swatchhta Pakhwada



Housekeeping in the mines office premises



Distribution of sanitation kits

Sanitation kits distributed



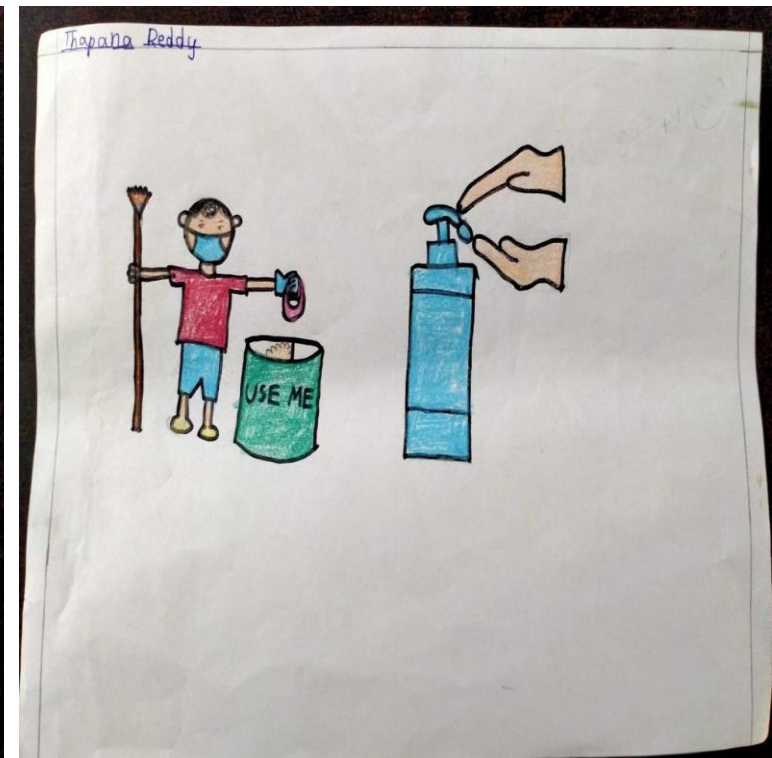
Awareness on swatchhata in workers camp



Housekeeping in the workers camp



# Essay and drawing competitions on swatchhta awareness conducted in Govt.& Private schools





Constitution of SDU( Sustainable development Unit)	Constituted
Total Expenditure incurred for implementation Of SDF at Mine Level	About Rs.2,56,82,071/- (Rupees Two Crores Fifty Six Lakhs Eighty Two Thousand Seventy One Only) were spent towards implementation of SDF at mine level for the financial year 2021-22.
Innovation of energy saving by use of solar Power or other resources	5 % of the power using in the mines is being provided from Solar Power Panels located in mines and plant premises. Using Fuel additives to minimise the diesel consumption in the HEMM.
Community development	Enclosed
Disposal of mill tailing/tailing dam management	Nil
Identification of safety hazards	Identified hazardous areas and prepared and distributed Safe Operating Procedures to Operators of respective areas and displayed the same at suitable locations.
proper setting of residential colony	Residential colony is located at the plant premises with well laid CC Roads and with all the facilities like PHC, Safe drinking water, Temple, Park, Play ground, Club with indore games, thick plantation etc.
proper setting of administrative and industrial Building	Administrative office (Mines) with all the facilities like Chilled RO water, First Aid Station, Rest Rooms, OHP Conference Hall etc., Entire office is provided with Air Conditioners.
Effort for zero waste mining	We are using low grade above Sio2 - 15-22% by blending with high Gr, Lst.
Community centers	Provided





# CSR Expenditure Incurred by SCL Mine – 1&2, for the FY 2021–22

Sl. No	Parameters	Particulars of work done	Expenditure Incurred (In Rs) 2021-2022	Beneficiaries
1	Water Storage tanks drinking water supply facilities and irrigation support to agriculture	Supply of drinking water and donatation of submersible pumps. Financial assistance to lift irrigation scheme etc..	488300	Pedaveedu & Mattapally Villagers.
2	Preventive measure for mitigation of mine related health problems	Financial assistance to conduct health camp.	50000	Pedaveedu, Mattampally Villagers
3	Promotion of hygiene and sanitation public health initiatives	Monthly honorarium to PHC Mattampally and donation of try cycles, donation of pulse oxymeters etcc..	2223000	Mattapally & Mattampally ,Villagers
4	Skill development and vocational training programmes for local communities	Providing skill development programmes for Degree and Diploma completed students under the scheme.	3058585	Mattampally & Pedaveedu Villagers
5	Promotion of Literacy and Educations	Payment of Monthly honorarium to school teachers, financial assistance to celebrate National Library Week and consturction of Topilets fo boys & Girls etc...	1427300	Mattampally and Choutapally,Pedaveedu villagers
6	Support to social culture recreational activities	Donation of LED Lamps, Cement bags for the construction of mass congregartion, financial assistance for annadanam, donation for cultural activities tec...	322322	Mattampally Villagers
7	Livelihood & Socio economic standard implementation on support	Donation of cement for establishment of memorial statue.	92500	Mattampally & GundlapallyVillagers & Suryapet
8	Importance of road connectivity and public transport and other infrastructure facilities	Construction of CC roads,provided precast drainage slabs, Lighting arragnement for tennis court at miryalaguda, providing tree guards. development of donka road etc..	18020064	Mattampally, , Pedaveedu ,Choutapally,Miryalaguda etc...
<b>Total Expenditure</b>			<b>25682071</b>	





# Initiatives by Sagar Cements Limited



CC road in Mattampally



Rs.60,51,500.0 Lakh  
CC road in Mattampally



CC road in Mattampally



CC flooring in front of MRO office, Mattampally

Rs. 4,23,000/-



CC flooring in front of Police Stn, Mattampally



SCL has constructed CC roads in Mattampally ,Pedaveedu villages and also Police Station , Govt . offices Complex  
CC Flooring at Mattampally.





# Initiatives by Sagar Cements Limited



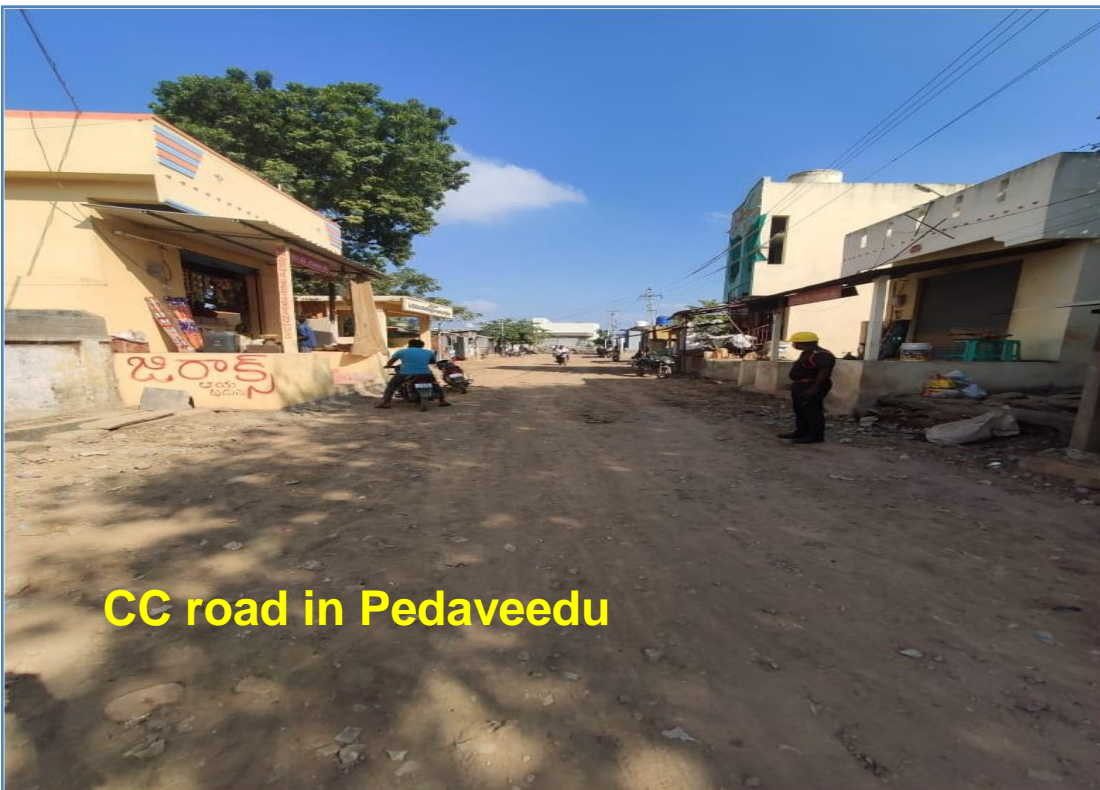
Drainage in Pedaveedu



Drainage in Pedaveedu  
Spent Rs.19,69,200/-



CC road in Pedaveedu



CC road in Pedaveedu



Road Before



Spent Rs.14,86,951/-  
Road After

Photos' of Drainage canals constructions along Slab covering in Pedaveedu Village, CC roads construction. & Repairs





# Initiatives by Sagar Cements Limited

Miryalaguda indoor stadium



Miryalaguda indoor shuttle badminton court  
Spent Rs.2,94,373/-



LED lights to Pedaveedu  
Spent Rs. 3,76,750/-



Spent Rs.48,000/- for 300 tree guards at Bilyanaik Thanda



Provided Tree Guards, LED Street Lights and Lighting to indoor stadium





# Initiatives by Sagar Cements Limited



Pulse Oxy meter  
Spent 7.4 Lakh



Spent Rs.45,000/-



## పశువైద్యశాలలో 16మంది సహాయకుల నియామకం

మరంపల్లి, న్యూస్టుడే: హుజూర్నగర్ నియోజకవర్గ పరిధిలోని పశువైద్యశాలలో ఎమ్మెల్యే శాసనపూడి సైదిరెడ్డి చొరవతో 16 మంది ప్రాథమిక చికిత్స సహాయకులను జిల్లా పశుసంవర్ధకశాఖ అధికారి డి.శ్రీనివాసరావు పొరుగు సేవల (అవుట్ సోర్సింగ్) ద్వారా నియమించారు. వీరందరికీ మరంపల్లి సాగర్ సిమెంట్స్ సీనియర్ డ్వారా ప్రతి సహాయకుడికి నెలకు రూ.10 వేలు చెల్లించే ఏర్పాటు చేశారు. సహాయకుల అక్టోబర్ నెల వేతనం రూ.1.60 లక్షలు చెక్కును సర్పంచి మున్మొంత్ శ్రీనివాసరెడ్డికి శుక్రవారం పరిశ్రమ ఎస్ఎఫ్పీ రమణమూర్తి అందజేశారు. ఈ సహాయకుల సేవలు రెండేళ్లపాటు కొనసాగించేందుకు రూ.38.40లక్షలు సామాజిక ఏకీకృత బాధ్యతలో భాగంగా కేటాయించినట్లు ఎస్ఎఫ్పీ చెప్పారు. మండలాల వారీగా హుజూర్నగర్కు నలుగురు, మరంపల్లికి ముగ్గురు, పాలకవీడు, నేరేడుపల్లె, మేళ్లచెరువు, గరిడేపల్లికి ఇద్దరేసి, చింతలపాలెంకు ఒకరిని కేటాయించామని జిల్లాపశు వైద్యాధికారి తెలిపారు. పశువైద్యాధికారులు శ్రీనివాసరెడ్డి, కె.శంకర్ హెచ్ఆర్ సీనియర్ మేనేజర్ శ్రీనివాస్, ఉప మేనేజర్ వెంకటరెడ్డి, గ్రంథాలయ కమిటీ చైర్మన్ బీవీ రామారావు పాల్గొన్నారు.



పశువైద్య సహాయకుల అక్టోబర్ నెల వేతనానికి చెక్కును అందిస్తున్న సాగర్ సిమెంట్స్ ఎస్ఎఫ్పీ రమణమూర్తి

ఈనాడు  
epaper.eenadu.net

## ప్రమాదం మిగిల్చిన వేదన.. ఊతమిచ్చిన వితరణ

మరంపల్లి, న్యూస్టుడే: దశాబ్దానికి పూర్వం మరంపల్లికి చెందిన గాయం గోవర్ధన్రెడ్డి విద్యుత్తు ప్రమాదంలో తీవ్రంగా గాయపడ్డాడు. ఆ ప్రభావం వెన్ను పూసపై పడడంతో కాళ్ళ రెండూ పూర్తిగా చచ్చుపడ్డాయి. నడవలేని స్థితిలో మూడు చక్రాల సైకిల్పై తిరుగుతూ తనవని తాను చేసుకుంటున్న బాధితుడికి ఇటీవల వైద్యులు ట్రై సైకిల్పై తిరగడంవల్ల వెన్నుముకపై భారం పడే ప్రమాదముందని హెచ్చరించారు.



గోవర్ధన్రెడ్డికి విద్యుత్తు సాయంతో నడిచే చక్రాల కుర్చీని అందజేస్తున్న సాగర్ సిమెంట్స్ ప్రతినిధులు

దానివల్ల మంచానికే పరిమితం కావాల్సి వస్తుందని హెచ్చరించారు. సులభంగా తిరిగే విద్యుత్తు చక్రాల కుర్చీని వాడాలని సూచించారు. అందుకు ఆయన ఆర్థిక పరిస్థితి సహకరించక పోవడంతో తన దీనిస్థితిని స్థానిక సాగర్ సిమెంట్స్ యాజమాన్యానికి గోవర్ధన్ వివరించారు. స్పందించిన యాజమాన్యం ముంబాయిలో రూ.60 వేలతో ప్రత్యేకంగా తయారు చేయించిన విద్యుత్తు చార్జింగ్ కుర్చీని తెప్పించి సోమవారం కర్మాగారం ఉన్నతాధికారులు గోవర్ధన్ రెడ్డికి అందజేశారు. దీనిపై కీ.పి.వరకు సునాయాసంగా తిరగవచ్చని వారు చెప్పారు. ఎస్ఎఫ్పీ రమణమూర్తి సర్పంచి మున్మొంత్ శ్రీనివాసరెడ్డి, డీజీఎం హరిదాస్, సీనియర్ మేనేజర్ శ్రీనివాస్, ఉప మేనేజర్ వెంకటరెడ్డి పాల్గొన్నారు.

Monthly Honorarium to Veterinary Assistants, Huzurnagar Constituency , Donation of Tri-Cycle & 500 Pulse Oxy meters in various Govt Hospitals.





# Toilets in ZPH School, Mattampally, Spent Rs.9,73,300/-



For Boys



For Girls





Road divider, Mattampally



Spent Rs.9,86,000/-







# Initiatives by Sagar Cements Limited.



CC Flooring  
Spent Rs.1.4 Lakh



Lawn in the church, Mattampally



1<sup>st</sup> floor slab to church, Pedaveedu  
Rs.11,26,690/-



1000 Cement bags to Masjid,  
Pedaveedu

SCL has donated funds to renovate the Church and Temple of Mattampally & Pedaveedu Village.



Maintenance of RO Water Plants provided by SCL at Pedaveedu & Mattampally villages



# Solar Panels (1.25 MW) on Roof Top of Railway Wagon shed





# Administrative Office (Mines) View



Admn. office (Mine)



HOD Chamber



Staff & Officers Chamber



First Aid Station



Record Room



Corridor 1st & 2nd Floor







To Ensure Clean and Neat Environment in the Colony under Swachh Bharath. Management has distributed Garbage Collection boxes 2 No's each (For organic & Inorganic Waste) to entire colony and provided dust collection facility from the houses of individuals in the colony.



# Management personnel Participation in the Company Events





# Thank you

